

Main Council Debate – Anti-social Behaviour
Wednesday 6th April 2005
Key Introductory Notes

1. What is anti-social behaviour in Stevenage?

Following a ‘Fear of Crime’ survey to Stevenage residents in September 2001, the Community Safety Strategy 2002 - 2005 defined anti-social behaviour to be:

- Damage to property including graffiti
- Threatening and abusive language and/or behaviour
- Disorder and alcohol related incidents
- Community problems including noise, neighbour disputes, nuisance and harassment
- Abandoned vehicles, rubbish dumping and fly tipping.

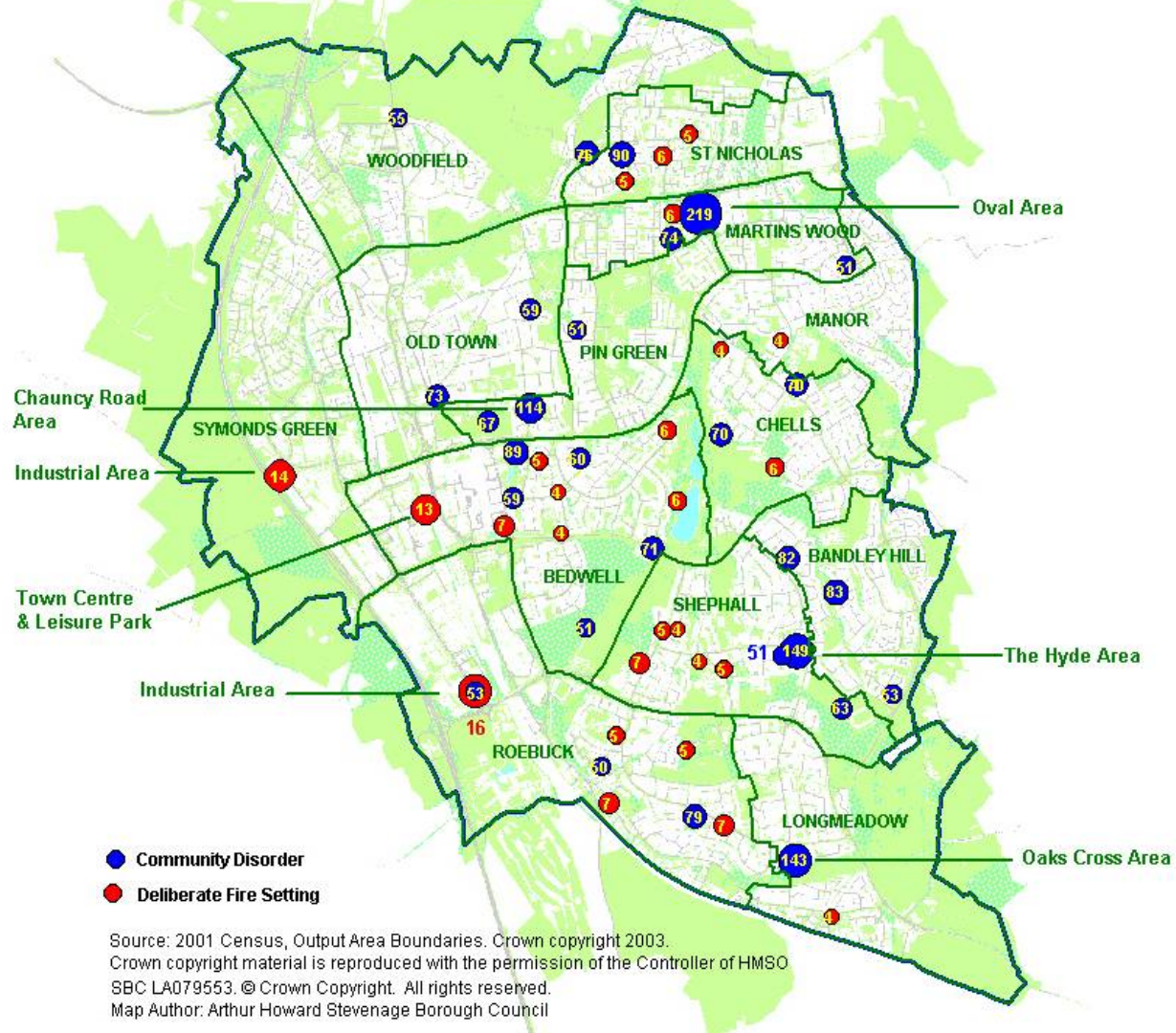
Some changes to the definition have been made within the Community Safety Strategy 2005 – 2008 following results from the most recent ‘Fear of Crime’ survey, in September 2004, that highlighted the below issues as a ‘fairly big problem’:

- Vandalism
- Graffiti
- Drunk people
- Groups of youths
- Under age drinking
- Rubbish and litter

2. How do we measure it?

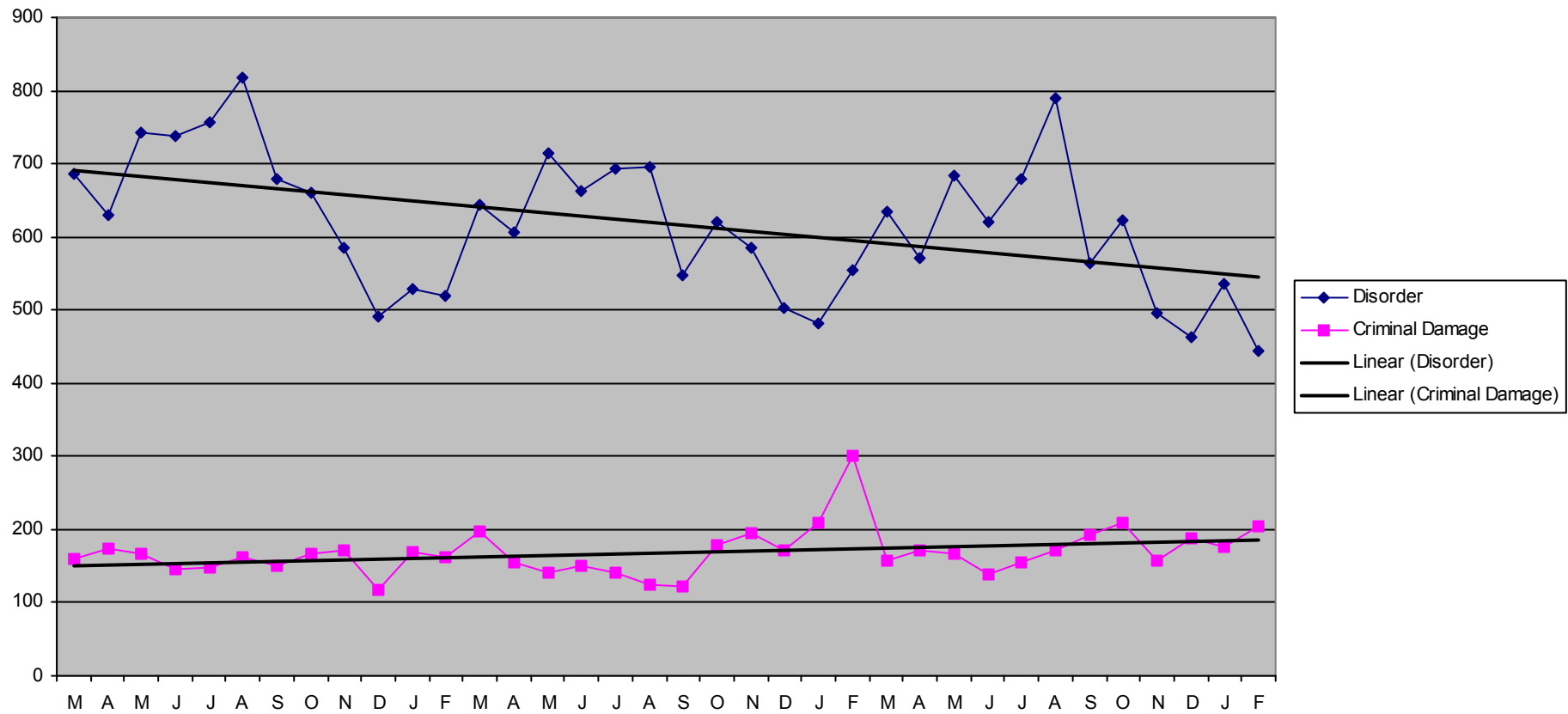
Using Police data for ‘Disorder’ by Output Area, we can see there are high concentrations of incidents at The Oval, The Hyde, Popple Way (Chauncy) and Oaks Cross.

COMMUNITY DISORDER & DELIBERATE FIRE SETTING 2004 BY OUTPUT AREA



There has been a steady downward trend in police recorded disorder incidents over the last 3 years and a steady rise in reports of criminal damage as shown in the below graph.

Disorder & Criminal Damage Mar 02 To Feb 05



Annual Totals of Disorder and Criminal Damage between March 1st and February 28th each year

Annual Periods	Disorder	Criminal Damage
2002/2003	7833	1891
2003/2004	7311	2086
2004/2005	7101	2088

Categories of Disorder relating to anti-social behaviour recorded by Police

Disturbance in licensed premises
Disturbance in a public place
Disturbance in private property
Youth disorder
Civil Dispute
Domestic Incident
Drunkenness
Homophobic
Neighbour Dispute
Noise nuisance
Racial/ethnic

3. Links with the social environment in Stevenage

The national index of deprivation ranked Stevenage as the most deprived in Hertfordshire and 184th out of 354 districts in England. The Bedwell ward is in the top 20%

In a nutshell, Stevenage has significant issues of poverty, single parent families, low educational achievement and all the other factors that contribute to deprivation.

4. Where does it happen?

Approximately 16% of reported anti-social behaviour incidents occur in the Town Centre and Leisure Park area. Other concentrations of anti-social behaviour incidents are found at local Neighbourhood Shopping areas as highlighted in the above map.

5. What issues are there in the Town Centre and Leisure Park?

Fire Service Data for deliberate fire setting shows high concentrations in the Industrial areas, Town Centre and Leisure Park

When comparing 2004/05 Town Centre data with the previous year we find the following:

Reductions during the day in youth nuisance (15%), criminal damage (6%) and theft of pedal cycles (24%)

Reductions during the evening in public order offences (16%), common assault (19%), misuse of drugs (39%) and youth nuisance (15%)

Increases during the day all relating to theft at approximately 16%

Increases during the evening in malicious wounding 95%, criminal damage (43%) and drunkenness (21%)

6. What initiatives has the Partnership delivered over the last 3 years

- A range of youth initiatives including the Mentoring Basketball Association Project at The Oval, Chells and Great Ashby, Summer Fest programme, other sports, football tournaments, cultural activities and work with young people engaged with the Youth Offending Team.
- Six new youth posts covering Youth Initiatives (13 – 18 years) and (8 – 13 years). A Youth Initiatives Officer funded by SRB with Community Safety (SBC), two Play Rights officers funded by the Children's Fund with Community Development (Play), SBC, two Youth Inclusion Support Panel officers funded by the Children's Fund with HCC (YOT) and one Positive Activities for Young People post with HCC (Bowes Lyon House).
- Anti-social Behaviour Coordinator and Tenant Enforcement Officer Posts and delivery of Anti-social Behaviour Contracts and Orders. 37 Anti-social Behaviour Contracts and seven Anti-social Behaviour Orders are currently in operation. Three further ASBO's are being applied for in connection with ASB at The Oval
- Eleven Police Community Support Officers including one Schools Liaison Officer and one Drugs Specialist post (being recruited). Three are funded by SBC, four are funded by Police and four funded by HCC.
- Four mobile CCTV cameras and surveillance equipment
- A number of wall murals around neighbourhood shopping areas
- Increased support to Neighbourhood Watch and joint work with Local Area Committees
- Pub Watch Scheme

- ☑ Six new Stevenage volunteers with the Victim Support Scheme to work with victims and witness in relation to cases of anti-social behaviour
- ☑ Distributed a range of advice leaflets and information inserts into the Council's Chronicle magazine
- ☑ 3rd Party reporting leaflet for hate crime
- ☑ Three Environmental Action Days
- ☑ Seven Section 30 of the Anti-social Behaviour Act 2003 Dispersal Orders enforced
- ☑ Crucial Crew for all primary schools (Year 6 – 12 years)
- ☑ Secondary School bullying, harassment, drugs misuse and hate crime projects
- ☑ Alcohol Ban from Burwell to The Hyde
- ☑ Partnership work with voluntary groups such as Cornerstone (church run youth group in Bedwell) Safe Scheme (Youth project in Bedwell run by Connie Reece) Friendship groups (for adults providing information on life skills and good health), Asian Women and Elders groups
- ☑ Developed a Prolific and Priority Offender Scheme. The Strategy should stop people becoming prolific offenders, catch and convict those who are and offer real alternatives to those who would return to prolific offending after sentence. The Partnership has identified 20 prolific and priority offenders for targeting under the 'Catch and Convict' and 'Rehabilitate and Resettle' strands. They are chosen by the nature and volume of the crimes that they are committing, the nature and volume of harm they are causing and the impact the individuals concerned have had on the local community. A multi-agency action group manages the case files and action plans for each individual selected. By December 2004, in Stevenage 72 arrests and 113 charges were made. In addition 20 young people at risk of taking up a 'criminal career' by committing the worst anti-social behaviour and community problems are being identified for agency intervention under the 'Prevent and Deter' strand. This will be a coordinated multi-agency approach to prevent a young person from 'graduating' to an Anti-social Behaviour Order or to the Catch and Convict stage.
- ☑ Neighbourhood Wardens and a Drugs Warden
- ☑ Noise monitoring patrols and enforcement measures

What will the Partnership be doing differently to tackle ASB over the next 3 years?

- Individual agencies with the Stevenage CDRP can do little directly to tackle any of these issues on their own. Many issues raised require input across several Council departments and agencies together. Enforcement measures can be taken where the legal criteria is met under

the definition as acting “in a manner that caused or was likely to cause harassment, alarm or distress to one or more persons not of the same household as (the defendant)” *Crime and Disorder Act 1998*.

- Six Neighbourhood Action Teams will be set up in June 2005 in line with the six Area Committees to tackle priority issues in each area. A core membership from Police, SB Council Officers, Area Committee Chairs, Community Centre staff and Neighbourhood Watch will be invited to take part in the teams. A further group will be set up to cover the Town Centre and Leisure Park.
- Stevenage Borough Council will also deliver its Community Safety Action Plan 2004 – 2007 where enhanced services will be provided in areas of our core service delivery where community safety implications have been identified.
- A Prolific and Priority Offender Scheme has 3 elements including ‘Catch and Convict’, ‘Prevent and Deter’ and ‘Rehabilitate and Resettle’ and will target known persistent offenders in Stevenage. The Police will lead on the first, Probation on the second and the Youth Offending Team on the third.

The Stevenage Community Safety Strategy 2005 – 2008 will deliver a range of projects (some of which are detailed below) to address the following areas:

Criminal Damage

- Improved recording and analysis
- SBC Garage Management Strategy
- Increased security measures such as lighting in hot spot locations

Creating positive perceptions of young people

- Summer Fest Programme and continuity of youth projects
- Youth Council and Communications Strategy for young people

Creating safer underpasses and park areas

- Implementation of SBC Parks Strategy following consultation

More attractive and vibrant neighbourhood shopping areas

- Programme of environmental improvements at neighbourhood shopping areas
- Graffiti Busters
- Four Environmental Action Days planned for 2005/06

Harassment

- Education through schools and sporting activities
- Simplified reporting systems with the Police

Rubbish, fly tipping and abandoned motor vehicles

- Environmental Action Days
- Expansion of the Fixed Penalty Notice Scheme

Vehicles on footpaths

- Parking Strategy and Fixed Penalty Notice enforcement

General disorder including alcohol related disorder

- Anti-social behaviour Contracts and Orders
- Alcohol ban
- Pub Watch
- Licensing Conditions
- Mobile CCTV and CCTV links to the Control Centre, Radios and surveillance equipment
- PCSO's