

## Appendix A

### Breakdown of data according to crime type

#### 1. All crime

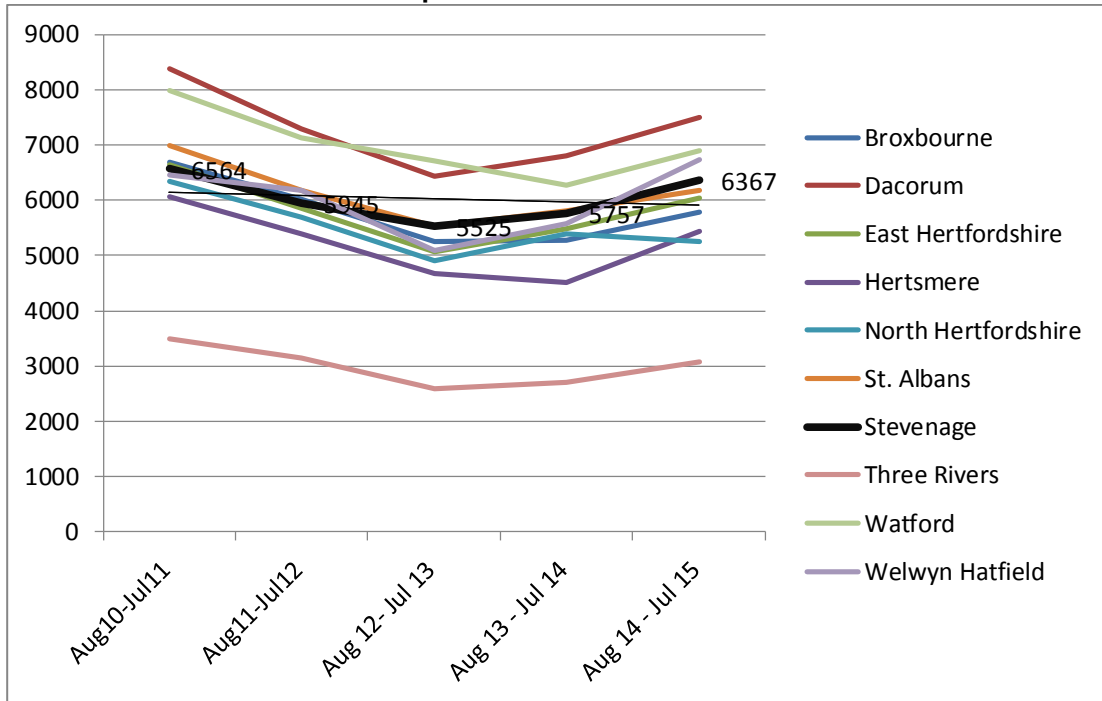
##### 1.1 Strategic assessment data 2010 – 2015

1.1.1 The strategic assessment data shows us that Stevenage CSP is at a similar 'all crime' level now as it was in 2010. There was a steady decline between 2010/11 (at 6564 crimes) and 2012/13 (at 5525 crimes), which led to a steady increase (to 6367 crimes) in 2014/15. Stevenage CSP's county ranking has been steady at nine, moving to tenth place during 2013/14; swapping places with Watford CSP. Watford and Broxbourne are included in some of our MSGs for several crime categories, which are detailed throughout this report. Please see the table and charts below.

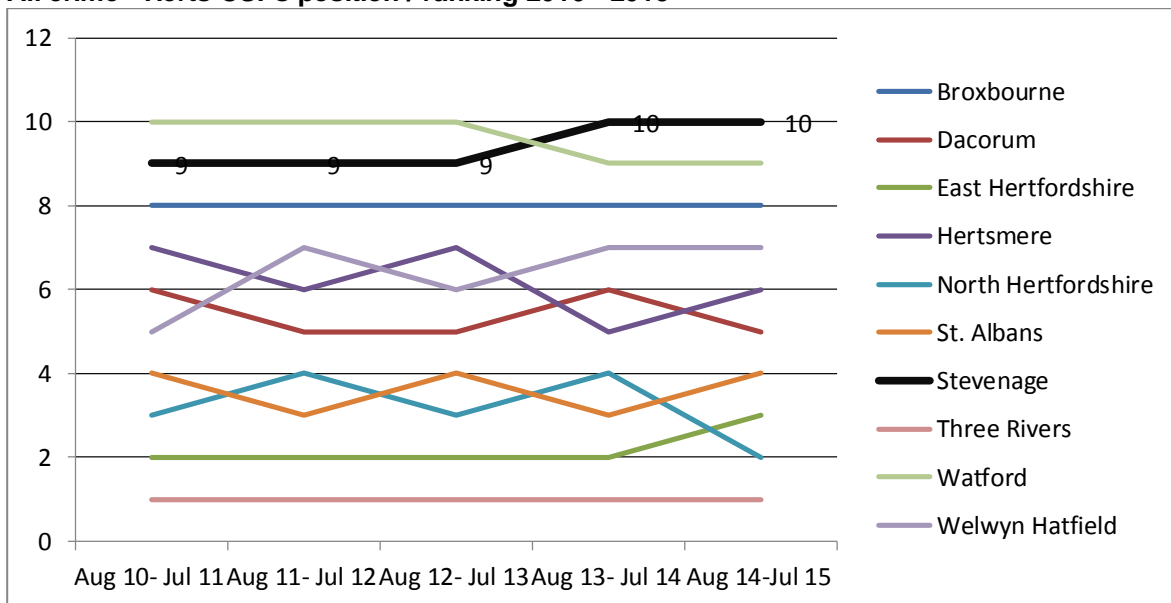
##### All crime total – Herts CSPs

Names	Aug10- Jul11	Aug11- Jul12	Aug 12- Jul 13	Aug 13 - Jul 14	Aug 14 - Jul 15
Broxbourne	6679	6027	5240	5272	5788
Dacorum	8375	7286	6426	6804	7495
East Hertfordshire	6630	5846	5055	5480	6029
Hertsmere	6064	5397	4669	4503	5436
North Hertfordshire	6335	5694	4903	5390	5241
St. Albans	6990	6189	5540	5816	6169
<b>Stevenage</b>	<b>6564</b>	<b>5945</b>	<b>5525</b>	<b>5757</b>	<b>6367</b>
Three Rivers	3492	3150	2584	2697	3073
Watford	7979	7122	6712	6268	6897
Welwyn Hatfield	6448	6169	5084	5584	6740

**All crime total – Herts CSPs comparator**



**All crime - Herts CSPs position / ranking 2010 - 2015**



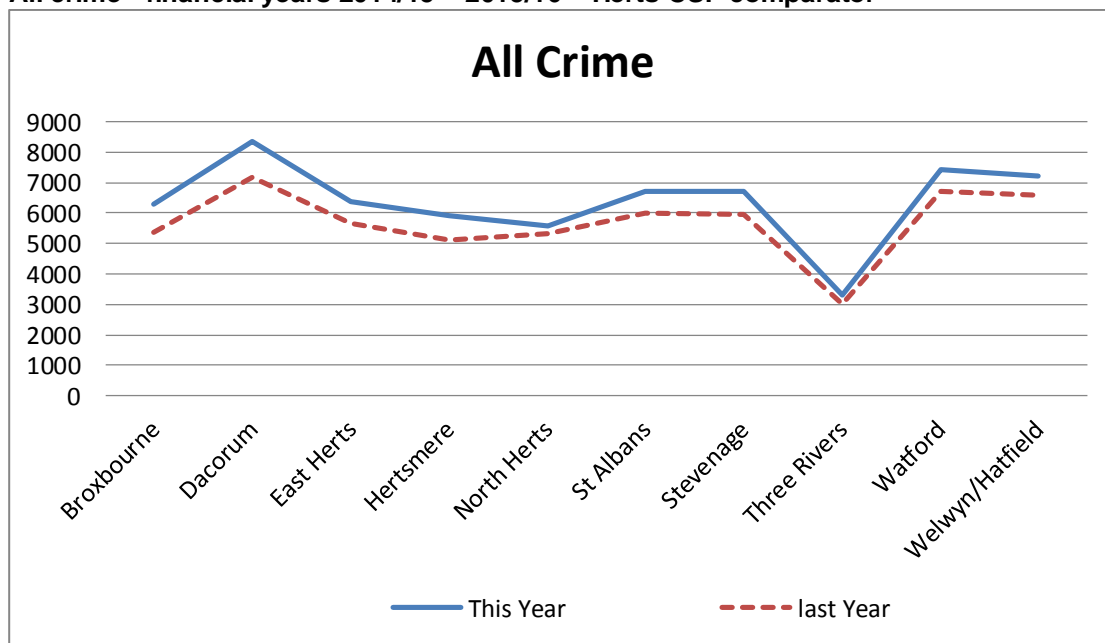
**1.2 Last two financial years – 2014/2016**

1.2.1 During the last two years, the ‘all crime’ figure has continued to increase in Stevenage (by 13.4% year on year). This is not unique to the borough, as all other districts have observed increases ranging from 4.9% in North Herts to 17.1% in Broxbourne.

**All crime – financial years 2014/15 – 2015/16**

CSP	All Crime			
	This Year	last Year	Change	% Change
Broxbourne	6301	5381	920	17.1%
Dacorum	8335	7194	1141	15.9%
East Herts	6398	5649	749	13.3%
Hertsmere	5930	5132	798	15.5%
North Herts	5568	5307	261	4.9%
St Albans	6721	6003	718	12.0%
Stevenage	6734	5936	798	13.4%
Three Rivers	3312	3025	287	9.5%
Watford	7409	6702	707	10.5%
Welwyn/Hatfield	7213	6571	642	9.8%
<b>Total</b>	<b>63921</b>	<b>56900</b>	<b>7021</b>	<b>12.3%</b>

**All crime - financial years 2014/15 – 2015/16 – Herts CSP comparator**



**1.3 Ward data 2011-2016**

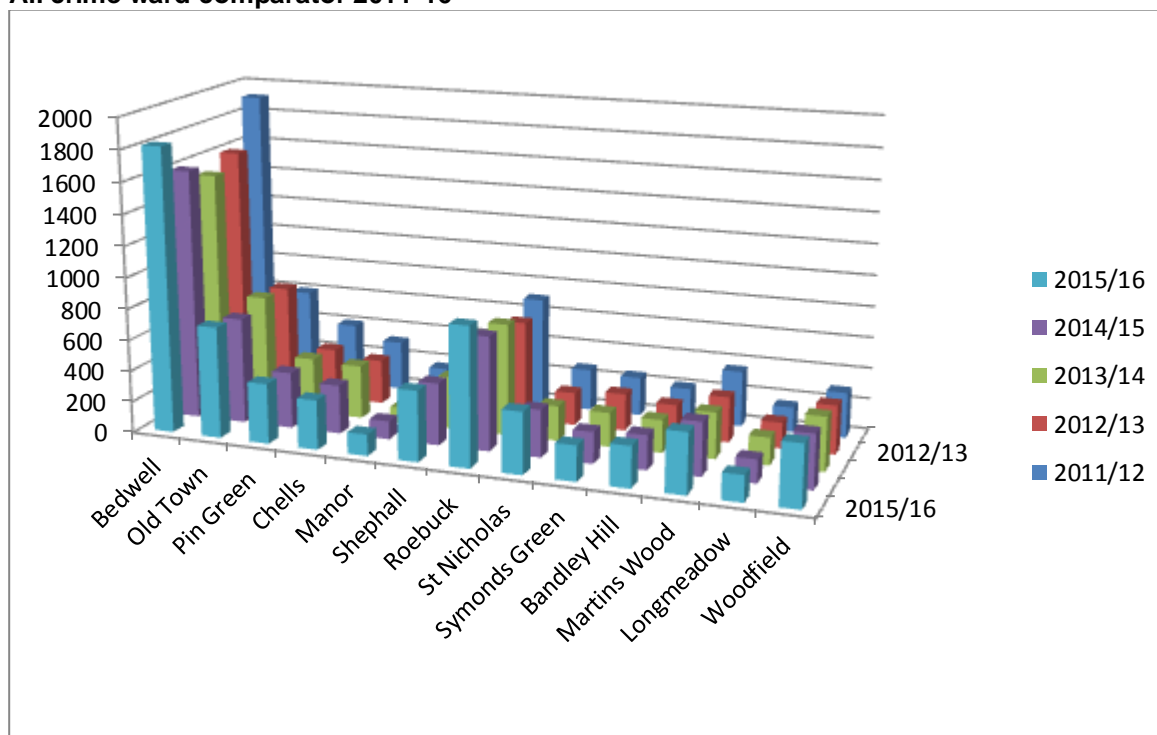
1.3.1 The ward data shows Bedwell as the top hot spot<sup>1</sup> for all crime between 2011 and 2016. The secondary hotspot fluctuates between the Old Town and Roebuck across all five years consistently, and both of these wards share very similar crime figures.

<sup>1</sup> Tables - Top hot spot is highlighted in red, second and third placed hot spots in amber.

**All crime ward data 2011-16**

	2011/12	2012/13	2013/14	2014/15	2015/16
Bedwell	1912	1597	1510	1603	1819
Old Town	602	712	733	678	713
Pin Green	404	326	357	359	385
Chells	319	286	344	312	317
Manor	169	103	97	117	137
Shephall	414	312	336	398	450
Roebuck	704	638	715	729	886
St Nicholas	266	210	224	304	395
Symonds Green	249	238	218	202	226
Bandley Hill	210	203	210	221	262
Martins Wood	358	291	296	343	385
Longmeadow	160	165	176	151	167
Woodfield	292	312	345	347	396

**All crime ward comparator 2011-16**



## 2. Burglary dwelling

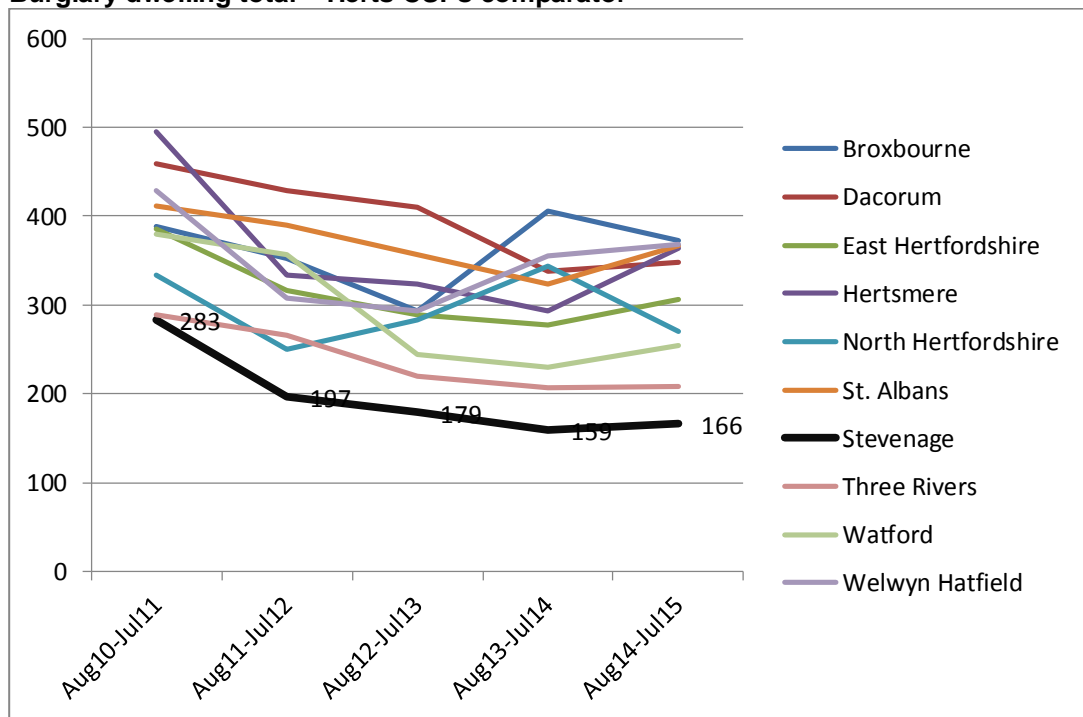
### 2.1 Strategic assessment data 2010 – 2015

2.1.1 The strategic assessment data shows us that Stevenage CSP experienced a steadily decreasing level of dwelling burglaries during the last five years, with 283 crimes in 2010/11 down to 166 in 2014/15. Stevenage CSP's county ranking has moved up from fifth to first place, and is the only CSP in Hertfordshire to show such a decline in this crime type. Please see table and charts below.

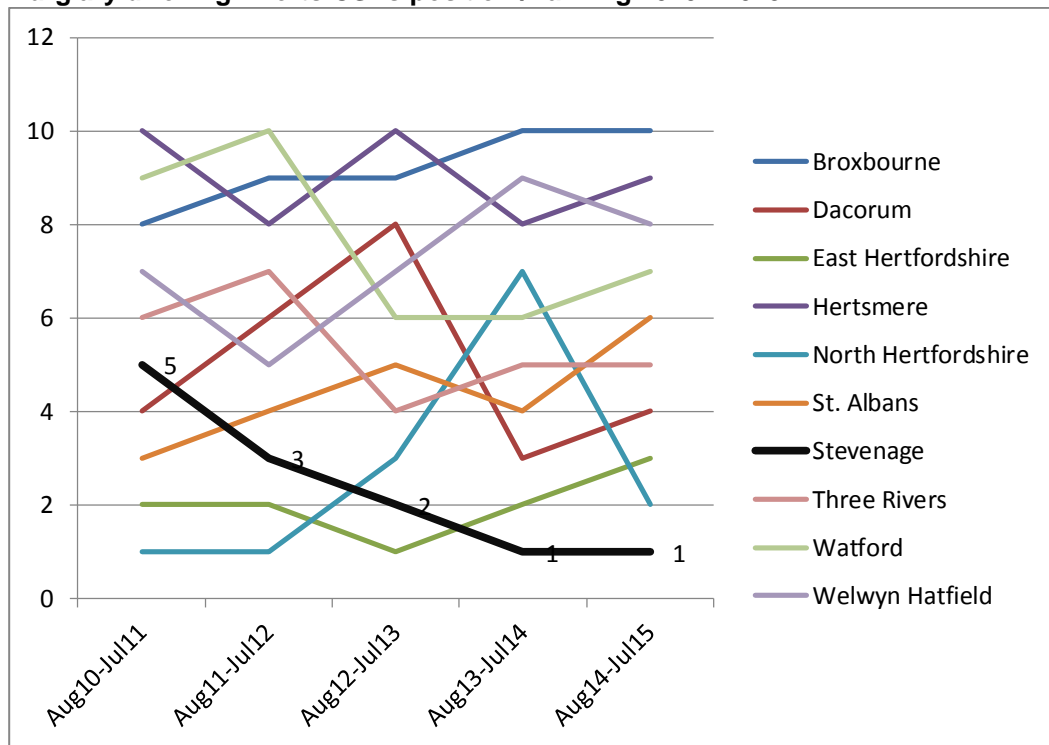
#### Burglary dwelling total – Herts CSPs

	Aug10-Jul11	Aug11-Jul12	Aug12-Jul13	Aug13-Jul14	Aug14-Jul15
Broxbourne	389	352	294	406	373
Dacorum	459	429	410	338	348
East Hertfordshire	385	316	289	277	306
Hertsmere	495	334	323	294	364
North Hertfordshire	334	250	284	344	271
St. Albans	411	390	357	324	367
<b>Stevenage</b>	<b>283</b>	<b>197</b>	<b>179</b>	<b>159</b>	<b>166</b>
Three Rivers	289	266	220	207	209
Watford	380	357	245	230	254
Welwyn Hatfield	429	308	294	356	368

#### Burglary dwelling total – Herts CSPs comparator



### Burglary dwelling - Herts CSPs position / ranking 2010 - 2015



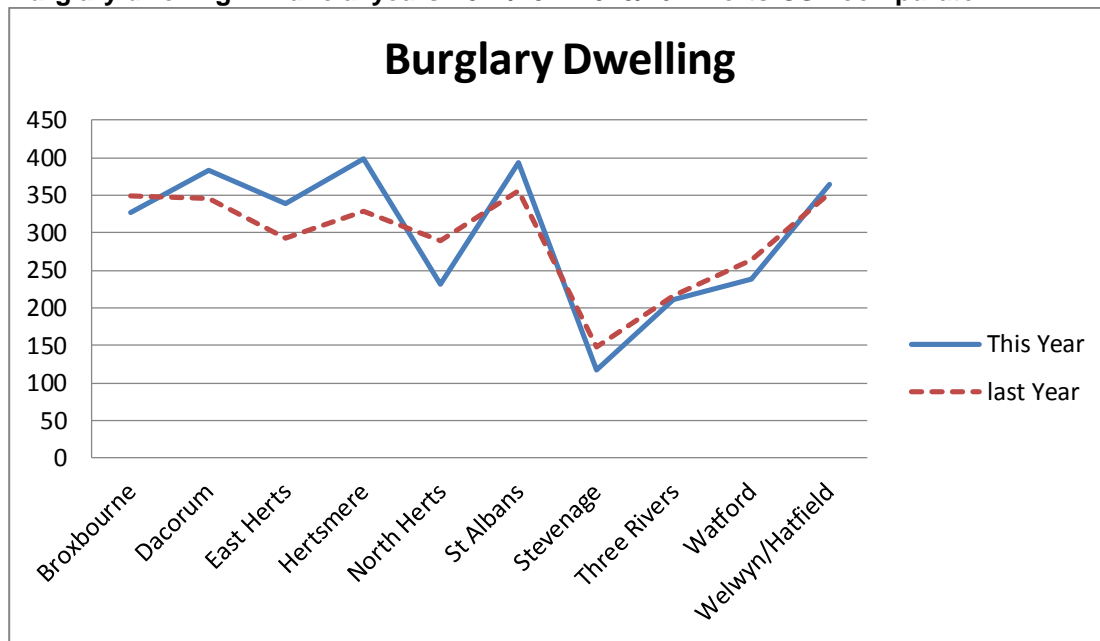
## 2.2 Last two financial years – 2014/2016

2.2.1 During the last two years burglary dwelling has continued to decrease in Stevenage (by 19.7% year on year). Six out of ten districts have experienced increases in this crime type, and there is a significant difference between Stevenage and Three Rivers in second place. Please see table and graph below.

### Burglary dwelling – financial years 2014/15 – 2015/16

CSP	This Year	last Year	Change	% Change
Broxbourne	327	349	-22	-6.3%
Dacorum	383	346	37	10.7%
East Herts	338	292	46	15.8%
Hertsmere	398	328	70	21.3%
North Herts	232	289	-57	-19.7%
St Albans	393	355	38	10.7%
Stevenage	118	147	-29	-19.7%
Three Rivers	211	216	-5	-2.3%
Watford	238	263	-25	-9.5%
Welwyn/Hatfield	364	353	11	3.1%
<b>Total</b>	<b>3002</b>	<b>2938</b>	<b>64</b>	<b>2.2%</b>

**Burglary dwelling - financial years 2014/15 – 2015/16 – Herts CSP comparator**



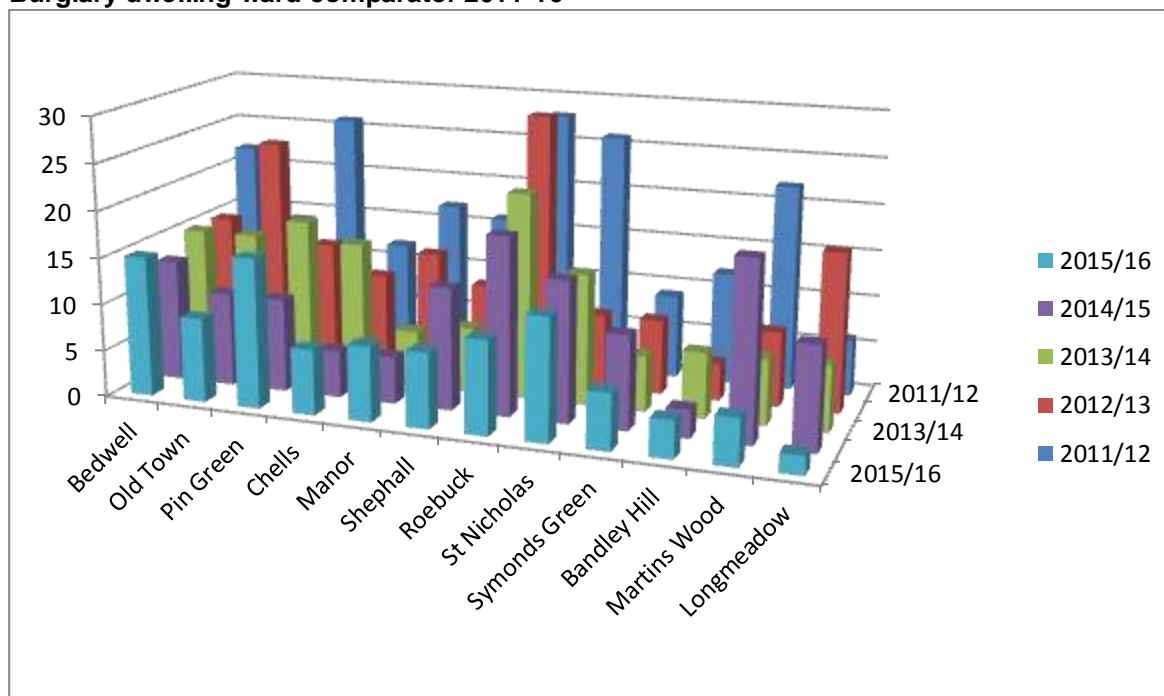
**2.3 Ward data 2011-2016**

2.3.1 The ward data shows Roebuck as the top hot spot for burglary dwelling between 2011 and 2015, changing to Pin Green in 2015/16. Secondary hotspots fluctuate between wards, which is to be expected as the nature of this crime type is opportunistic and therefore more random.

**Burglary dwelling ward data 2011-16**

	2011/12	2012/13	2013/14	2014/15	2015/16
Bedwell	22	15	15	13	15
Old Town	14	24	15	10	9
Pin Green	26	13	17	10	16
Chells	12	10	15	5	7
Manor	17	13	6	5	8
Shephall	16	10	7	13	8
Roebuck	28	29	22	19	10
St Nicholas	26	8	14	15	13
Symonds Green	9	8	6	10	6
Bandley Hill	12	4	7	3	4
Martins Wood	22	8	7	19	5
Longmeadow	6	17	7	11	2
Woodfield	6	11	21	6	15

## Burglary dwelling ward comparator 2011-16



## 2.4 Most similar groups

2.4.1 The table below demonstrates that Stevenage compares favourably to its most similar groups, moving from third place in 2011/12 to a consistent first place between 2013 and 2016. Currently, the most similar Hertfordshire district is Broxbourne, ranked in sixth place

Year	Per 1000	Average per 1000	MSG position	Closest MSG	Closest Herts MSG
2011-2012	6.648	9.925	3	Crawley (rank 2 – 6.155)	Watford (rank 8 – 9.842)
2012-2013	4.785	9.525	3	Rushmoor (rank 2 – 4.54)	Watford (rank 6 – 7.415)
2013-2014	4.9	11.72	1	Plymouth (rank 2 – 6.925)	Broxbourne (rank 5 – 9.852)
2014-2015	4.184	10.58	1	Plymouth (rank 2 – 6.34)	Broxbourne (rank 6 – 9.268)
2015-2016	3.410	9.663	1	Crawley (rank 2 – 5.594)	Broxbourne (rank 6 – 8.683)

## 3. Burglary other

### 3.1 Strategic assessment data 2010 – 2015

3.1.1 The strategic assessment data shows us that Stevenage CSP is experiencing lower levels of burglary other than in 2010/11 (which peaked at 359). However, these levels have peaked and troughed over the last five years, which is also evident across all

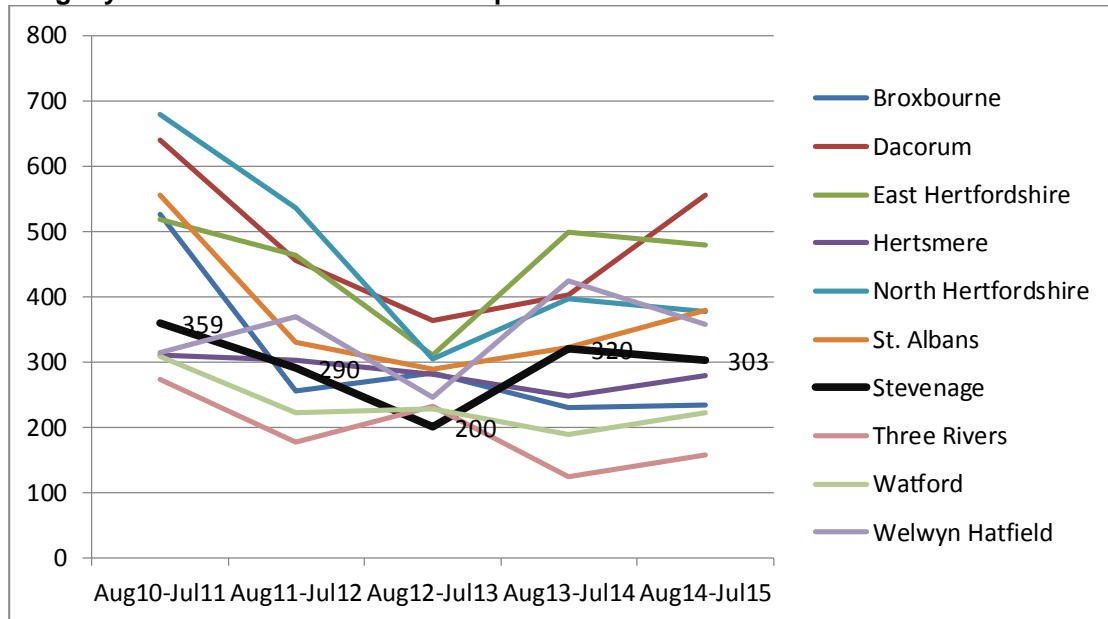


districts. The number of garage blocks in Stevenage may be a contributing factor to the level of this type of crime in Stevenage, and its high risk ranking as demonstrated in the charts below. It should also be noted that burglary other is an opportunistic crime, with no obvious pattern other than the types of buildings broken into (e.g. sheds / garages). Please see the graphs and table below.

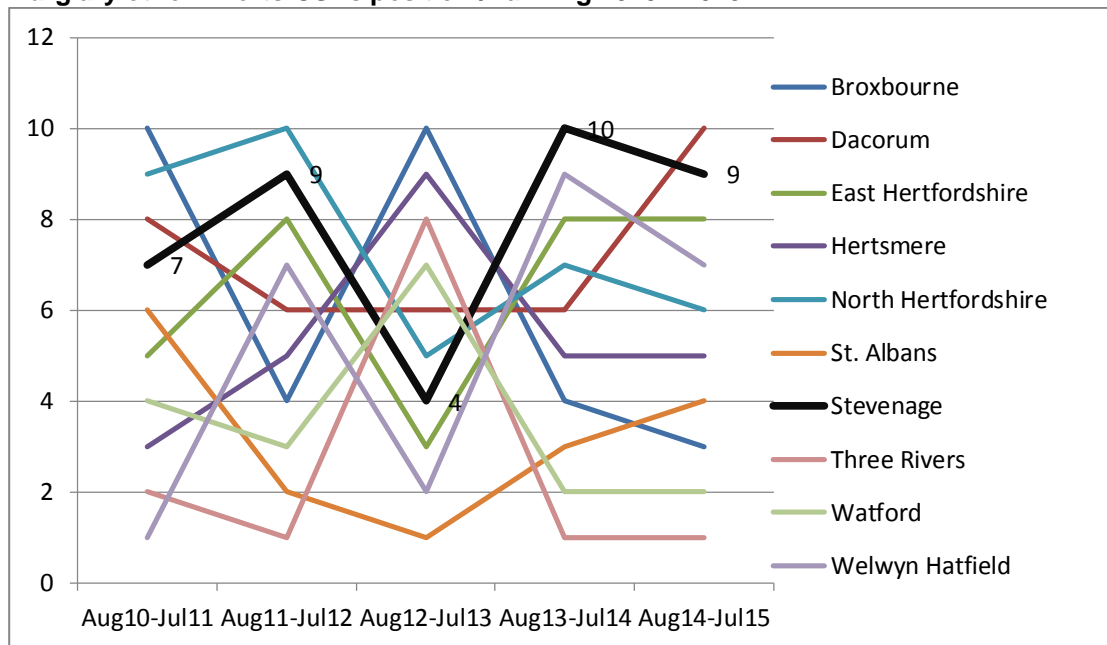
**Burglary other total – Herts CSPs**

	Aug10-Jul11	Aug11-Jul12	Aug12-Jul13	Aug13-Jul14	Aug14-Jul15
Broxbourne	526	255	283	230	233
Dacorum	639	455	363	402	556
East Hertfordshire	519	464	311	498	479
Hertsmere	310	303	280	247	278
North Hertfordshire	678	535	304	397	376
St. Albans	555	329	289	323	378
<b>Stevenage</b>	<b>359</b>	<b>290</b>	<b>200</b>	<b>320</b>	<b>303</b>
Three Rivers	273	178	231	124	157
Watford	309	223	228	188	222
Welwyn Hatfield	314	370	245	424	357

**Burglary other total – Herts CSPs comparator**



### Burglary other - Herts CSPs position / ranking 2010 - 2015



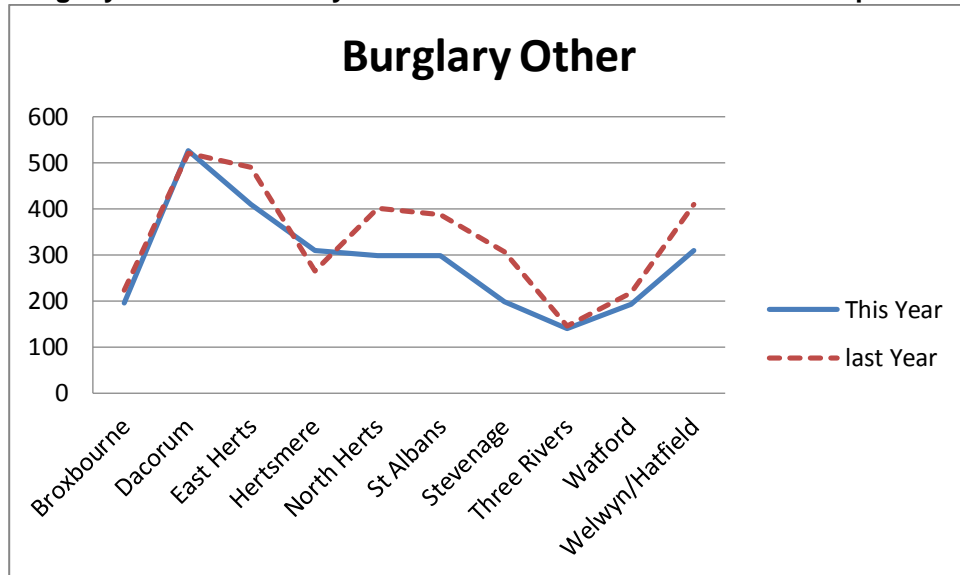
### 3.2 Last two financial years – 2014/2016

3.2.1 During the last two years burglary other has decrease in Stevenage (by 35% year on year). All other districts (except Hertsmere) have seen decreases in this crime type, with Stevenage demonstrating the largest percentage decrease overall. Please see table and graph below.

#### Burglary other – financial years 2014/15 – 2015/16

CSP	This Year	last Year	Change	% Change
Broxbourne	196	224	-28	-12.5%
Dacorum	528	520	8	1.5%
East Herts	410	491	-81	-16.5%
Hertsmere	309	264	45	17.0%
North Herts	298	401	-103	-25.7%
St Albans	299	387	-88	-22.7%
<b>Stevenage</b>	<b>199</b>	<b>306</b>	<b>-107</b>	<b>-35.0%</b>
Three Rivers	140	145	-5	-3.4%
Watford	192	217	-25	-11.5%
Welwyn/Hatfield	311	409	-98	-24.0%
<b>Total</b>	<b>2882</b>	<b>3364</b>	<b>-482</b>	<b>-14.3%</b>

**Burglary other - financial years 2014/15 – 2015/16 – Herts CSP comparator**



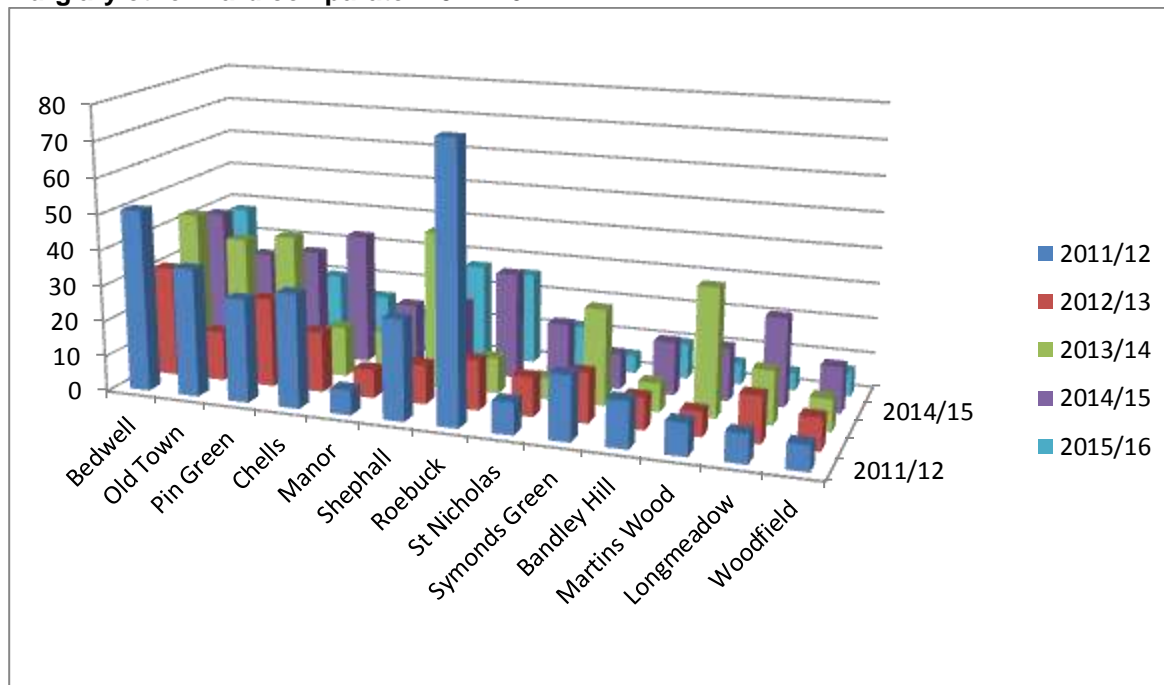
**3.3 Ward data 2011-2016**

3.3.1 The ward data shows that there are no significant hotspots which is to be expected as the nature of this crime type is opportunistic and therefore more random. Please see table and graph below.

**Burglary other ward data 2011-16**

	2011/12	2012/13	2013/14	2014/15	2015/16
Bedwell	51	31	43	40	38
Old Town	36	14	37	29	15
Pin Green	29	25	39	31	20
Chells	32	17	14	37	15
Manor	7	8	14	18	11
Shephall	28	11	44	20	27
Roebuck	77	14	10	30	26
St Nicholas	9	11	6	17	12
Symonds Green	18	14	27	10	5
Bandle Hill	13	9	8	15	10
Martins Wood	9	7	36	15	6
Longmeadow	8	13	15	25	5
Woodfield	7	9	9	13	7

### Burglary other ward comparator 2011-16



### 3.4 Most similar groups

3.4.1 The table below demonstrates that Stevenage’s position in the most similar group has fluctuated since 2011/12, but currently compares favourably in fifth place (out of 15). Currently, the most similar Hertfordshire district is Broxbourne, ranked in second place.

Year	Per 1000	Average per 1000	MSG position	Closest MSG	Closest Herts MSG
2011-2012	3.893	4.794	5	Medway (rank 4 – 3.745)	Watford (rank 1 – 2.747)
2012-2013	2.164	3.847	2	Plymouth (rank 3 – 2.199)	Watford (rank 1 – 2.059)
2013-2014	3.954	4.076	6	Coventry (rank 5 – 3.936)	Broxbourne (rank 3 – 2.903)
2014-2015	3.535	3.536	8	Coventry (rank 9 – 3.604)	Broxbourne (rank 3 – 2.339)
2015-2016	2.314	3.339	5	Havering (rank 4 – 2.285)	Broxbourne (rank 2 – 2.047)

## 4. Robbery

### 4.1 Strategic assessment data 2010 – 2015

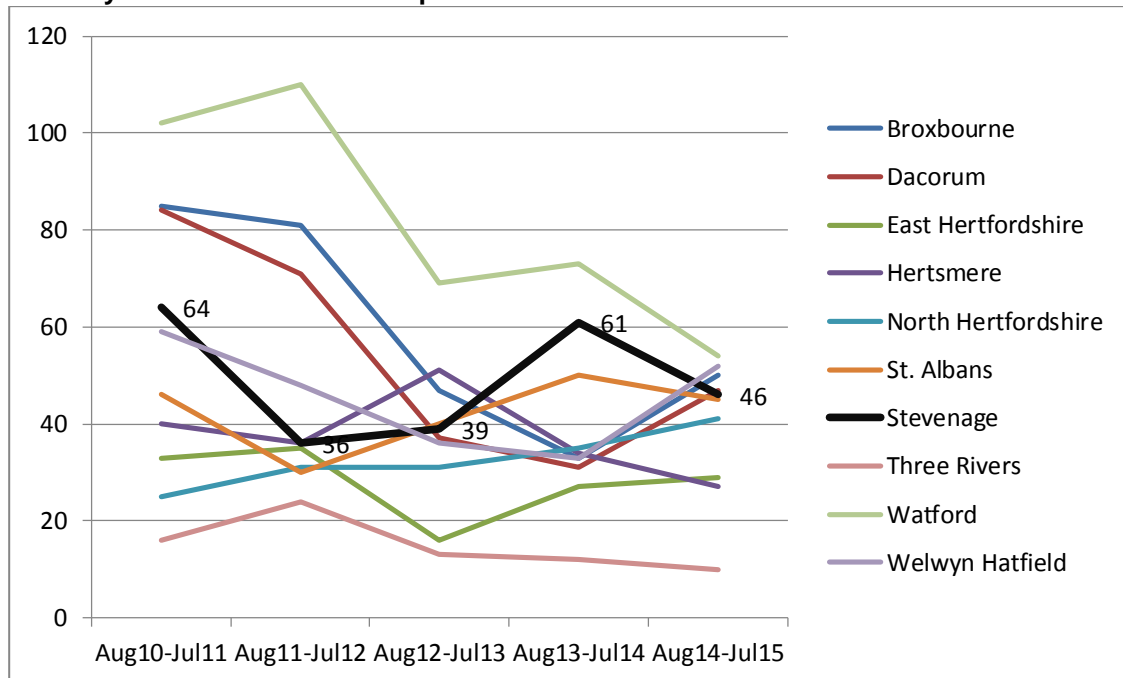
4.1.1 The strategic assessment data shows us that Stevenage CSP is experiencing lower levels of Robbery than in 2010/11 (which peaked at 64). However, these levels have

peaked and troughed over the last five years, which is also evident across other districts; but Stevenage saw a two year low in 2013/14 with 46 incidents. Stevenage is currently ranked ninth in the county rankings. Please see the table and charts below.

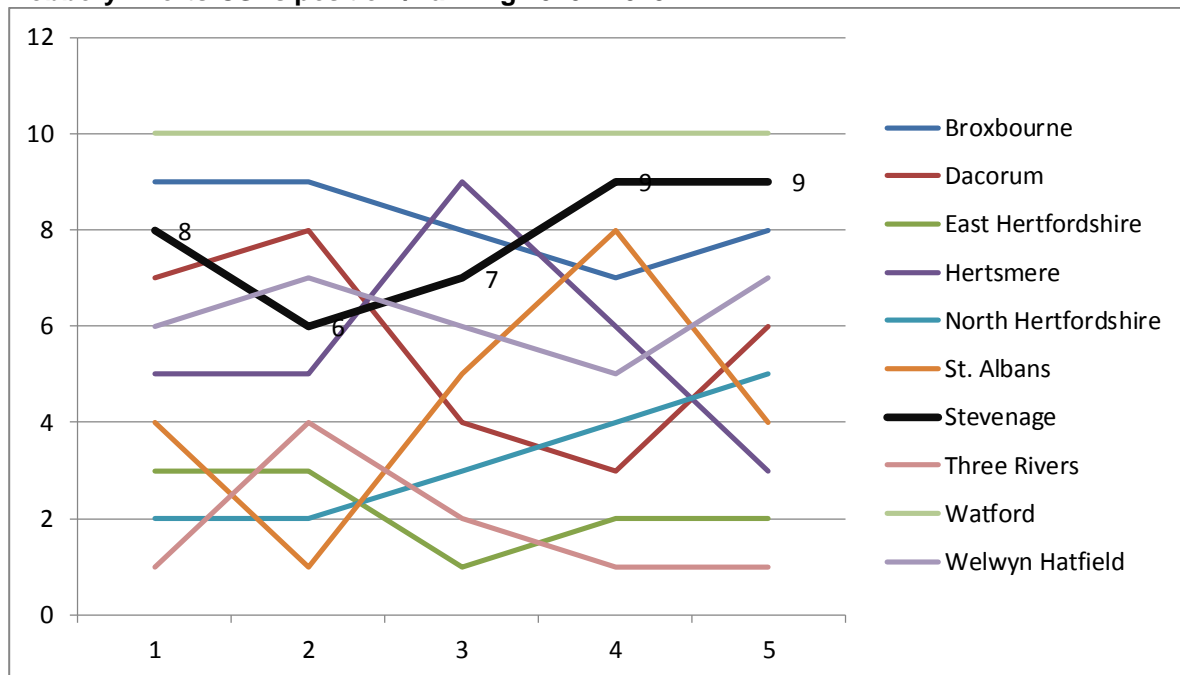
**Robbery total – Herts CSPs**

	Aug10-Jul11	Aug11-Jul12	Aug12-Jul13	Aug13-Jul14	Aug14-Jul15
Broxbourne	85	81	47	33	50
Dacorum	84	71	37	31	47
East Hertfordshire	33	35	16	27	29
Hertsmere	40	36	51	34	27
North Hertfordshire	25	31	31	35	41
St. Albans	46	30	40	50	45
<b>Stevenage</b>	<b>64</b>	<b>36</b>	<b>39</b>	<b>61</b>	<b>46</b>
Three Rivers	16	24	13	12	10
Watford	102	110	69	73	54
Welwyn Hatfield	59	48	36	33	52

**Robbery total – Herts CSPs comparator**



### Robbery - Herts CSPs position / ranking 2010 - 2015



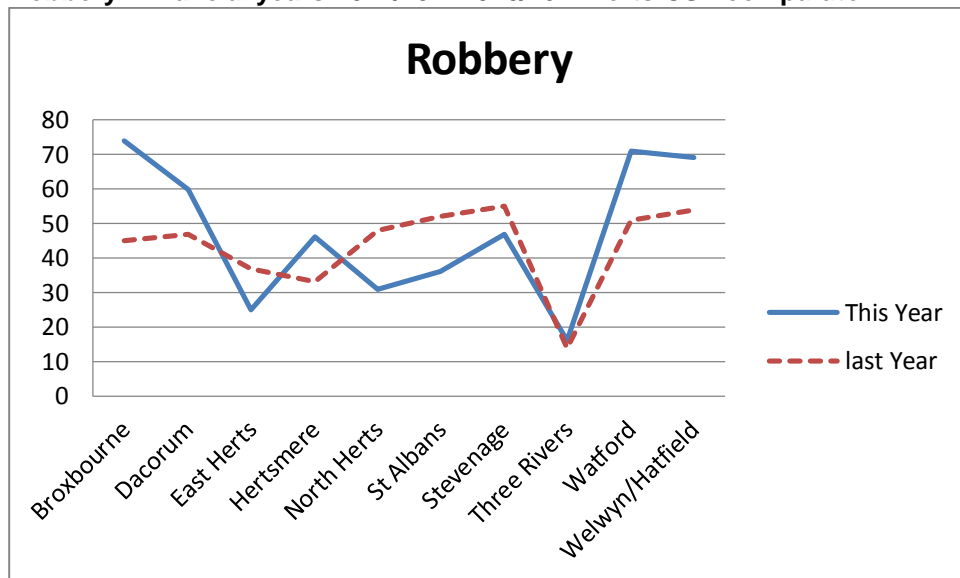
### 4.2 Last two financial years – 2014/2016

4.2.1 The table and chart below demonstrate a 14.5% decrease in robbery over the last two years. There does not appear to be any particular trend or pattern in this crime type across the county.

#### Robbery – financial years 2014/15 – 2015/16

	Robbery			
	This Year	last Year	Change	% Change
Broxbourne	74	45	29	64.4%
Dacorum	60	47	13	27.7%
East Herts	25	37	-12	32.4%
Hertsmere	46	33	13	39.4%
North Herts	31	48	-17	35.4%
St Albans	36	52	-16	30.8%
<b>Stevenage</b>	<b>47</b>	55	-8	14.5%
Three Rivers	16	14	2	14.3%
Watford	71	51	20	39.2%
Welwyn/Hatfield	69	54	15	27.8%
<b>Total</b>	<b>475</b>	436	39	8.9%

**Robbery - financial years 2014/15 – 2015/16 – Herts CSP comparator**



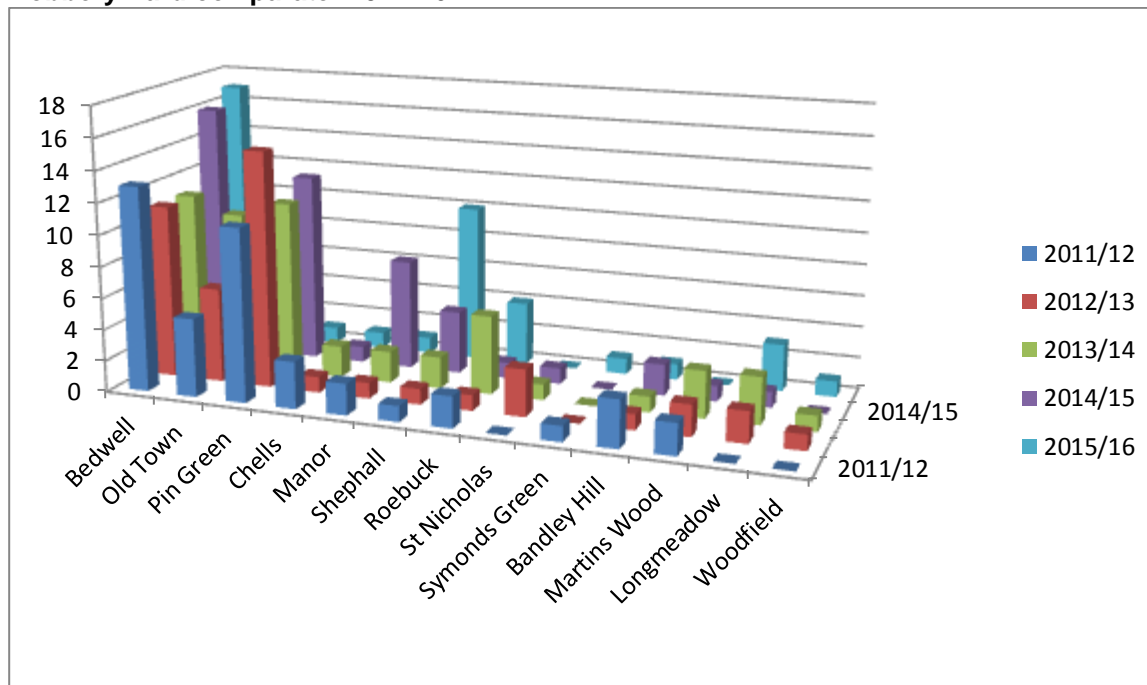
**4.3 Ward data 2011-2016**

4.3.1 The ward data shows Bedwell as the consistent primary hot spot for the last five years, with Pin Green the secondary hotspot between 2011/12 and 2014/15. In 2015/16, Shephall became the secondary hot spot for robbery, with the Old Town in third.

**Robbery ward data 2011-16**

	2011/12	2012/13	2013/14	2014/15	2015/16
Bedwell	13	11	11	16	17
Old Town	5	6	10	9	7
Pin Green	11	15	11	12	1
Chells	3	1	2	1	1
Manor	2	1	2	7	1
Shephall	1	1	2	4	10
Roebuck	2	1	5	1	4
St Nicholas	0	3	1	1	0
Symonds Green	1	0	0	0	1
Bandle Hill	3	1	1	2	1
Martins Wood	2	2	3	1	0
Longmeadow	0	2	3	1	3
Woodfield	0	1	1	0	1

## Robbery ward comparator 2011-16



### 4.4 Most similar groups

4.4.1 Robbery is not measured against our most similar group.

## 5. Motor vehicle crime

### 5.1 Strategic assessment data 2010 – 2015

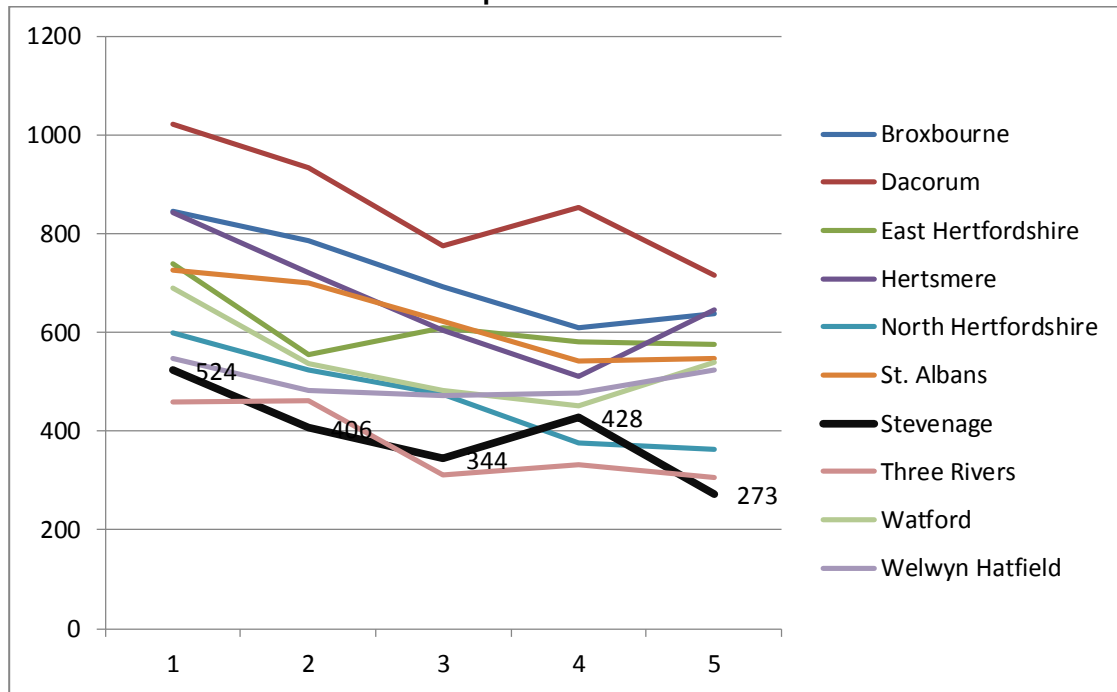
5.1.1 The strategic assessment data shows us that Stevenage CSP has significantly lower levels of vehicle crime than in 2010 (524 in 2010/11 down to 273 in 2014/15). There was a slight increase during 2013/14 (up to 428) which may be linked to the increase in garage break ins during that year. Please see table and chart below.

#### Vehicle crime total – Herts CSPs

	Aug10-Jul11	Aug11-Jul12	Aug12-Jul13	Aug13-Jul14	Aug14-Jul15
Broxbourne	845	786	691	609	638
Dacorum	1021	933	774	854	715
East Hertfordshire	739	554	609	582	576
Hertsmere	842	722	603	512	645
North Hertfordshire	598	524	474	377	363
St. Albans	725	701	621	542	548
<b>Stevenage</b>	<b>524</b>	<b>406</b>	<b>344</b>	<b>428</b>	<b>273</b>
Three Rivers	458	461	312	332	307
Watford	690	537	481	451	540
Welwyn Hatfield	548	482	473	477	524

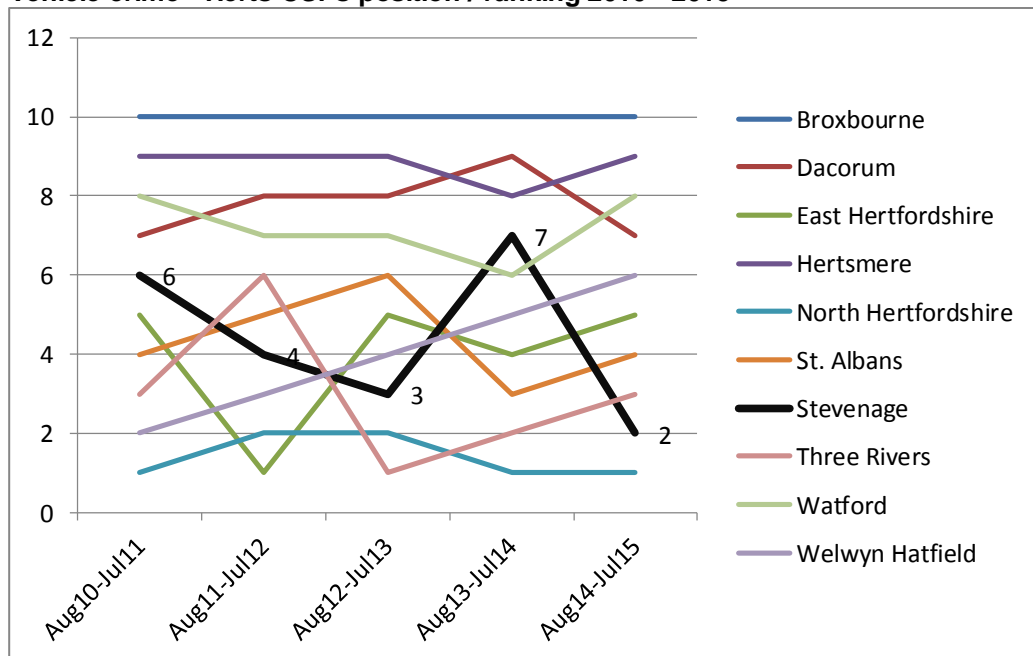


**Vehicle crime total – Herts CSPs comparator**



5.1.2 The chart below shows Stevenage CSP's county ranking as moving up from sixth to second place for vehicle crime, with a significant decrease in risk since 2013/14. Stevenage and Three Rivers are the only districts to have shown such a marked improvement.

**Vehicle crime - Herts CSPs position / ranking 2010 - 2015**



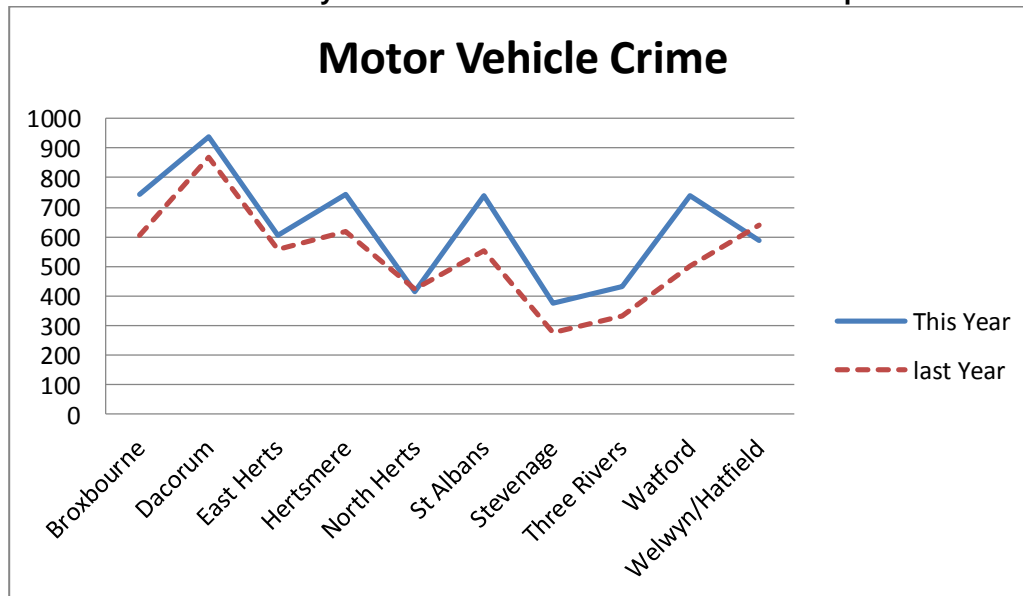
## 5.2 Last two financial years – 2014/2016

5.2.1 The last two years have demonstrated an increase of 34% (96 crimes), which may be due in part to the regular spate of summer garage break ins (more proactive work is underway for this summer). Eight out of 10 districts have also seen significant increases in this crime type.

### Vehicle crime – financial years 2014/15 – 2015/16

CSP	This Year	last Year	Change	% Change
Broxbourne	743	604	139	23.0%
Dacorum	939	867	72	8.3%
East Herts	605	556	49	8.8%
Hertsmere	745	616	129	20.9%
North Herts	417	423	-6	-1.4%
St Albans	740	552	188	34.1%
Stevenage	374	278	96	34.5%
Three Rivers	430	334	96	28.7%
Watford	741	502	239	47.6%
Welwyn/Hatfield	588	641	-53	-8.3%
<b>Total</b>	<b>6322</b>	<b>5373</b>	<b>949</b>	<b>17.7%</b>

### Vehicle crime - financial years 2014/15 – 2015/16 – Herts CSP comparator



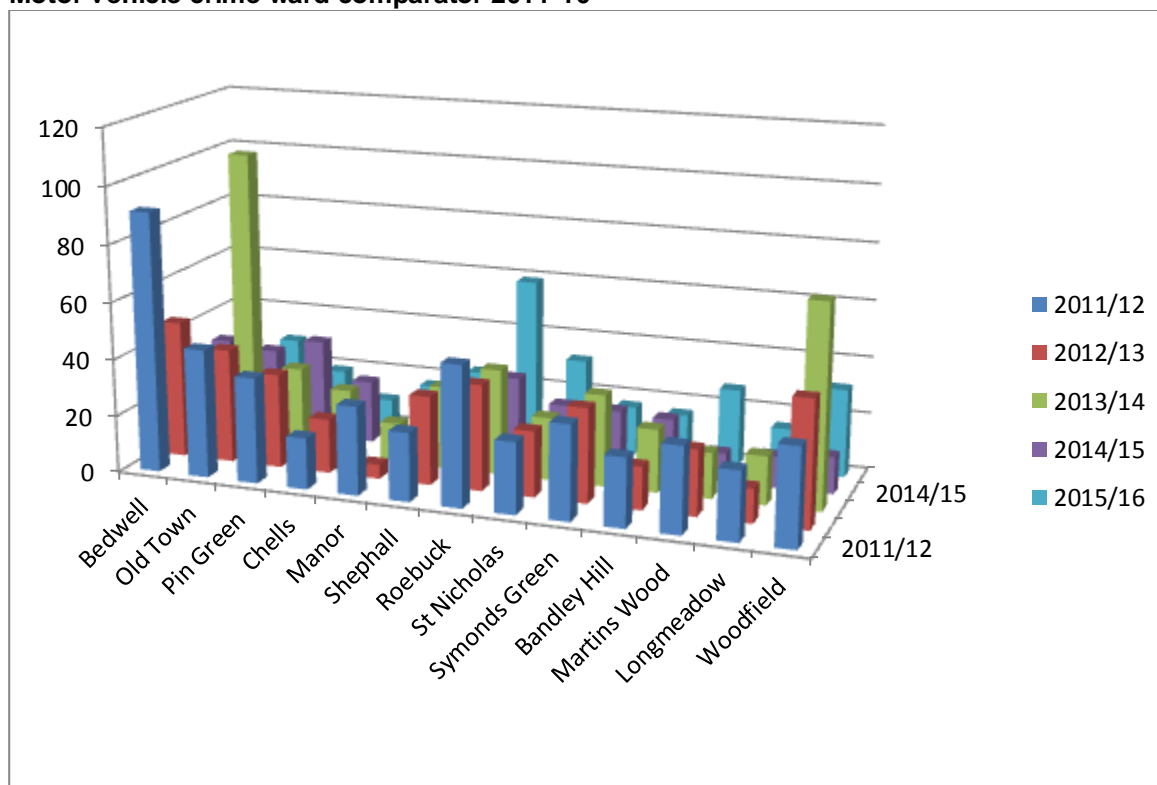
## 5.3 Ward data 2011-2016

5.3.1 The ward data for motor vehicle crime shows no significant hotspot, which is to be expected from an opportunistic crime type. Please see table and graph below.

**Motor vehicle crime ward data 2011-16**

	2011/12	2012/13	2013/14	2014/15	2015/16
Bedwell	91	48	31	32	45
Old Town	45	40	105	30	29
Pin Green	37	33	30	35	19
Chells	18	19	24	22	10
Manor	31	5	14	2	17
Shephall	24	31	29	21	24
Roebuck	49	37	37	29	59
St Nicholas	25	23	22	21	32
Symonds Green	33	33	32	21	17
Bandley Hill	24	15	22	20	16
Martins Wood	30	23	16	10	27
Longmeadow	24	12	17	11	15
Woodfield	34	44	71	13	31

**Motor vehicle crime ward comparator 2011-16**



**5.4 Most similar groups**

5.4.1 The table below demonstrates that Stevenage’s position in the most similar group has improved from third (in 2011/12) to first place in 2015/16. Currently, the most similar Hertfordshire district is Broxbourne, ranked in fifth place.

Year	Per 1000	Average per 1000	MSG position	Closest MSG	Closest Herts MSG
2011-2012	5.330	6.663	3	Plymouth (rank 4 – 6.869)	Watford (rank 8 – 6.939)
2012-2013	4.270	6.386	2	Watford (rank 3 – 4.459)	Watford (rank 3 – 4.459)
2013-2014	5.082	7.631	2	Plymouth (rank 1 – 4.229)	Broxbourne (rank 7 – 7.06)
2014-2015	2.965	6.628	1	Plymouth (rank 2 – 4.431)	Broxbourne (rank 4 – 5.473)
2015-2016	3.849	7.035	1	Plymouth (rank 2 – 3.85)	Broxbourne (rank 5 – 6.528)

## 6. Criminal damage

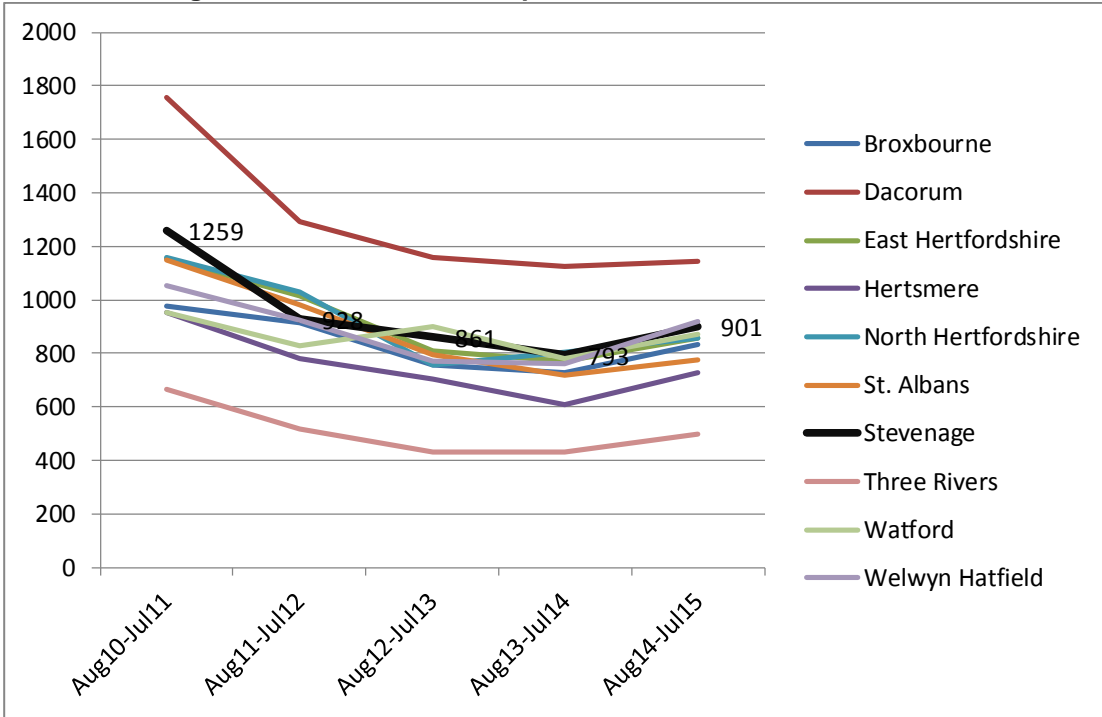
### 6.1 Strategic assessment data 2010 – 2015

6.1.1 The strategic assessment data shows us that Stevenage CSP has lower levels of criminal damage than in 2010 (1259 in 2010/11 down to 901 in 2014/15). However, following a steady decline, we have started to see an increase in this crime type since 2013/14. This pattern is repeated across most of Hertfordshire. Stevenage has been placed tenth in the county rankings for the last five years. Please see table and charts below.

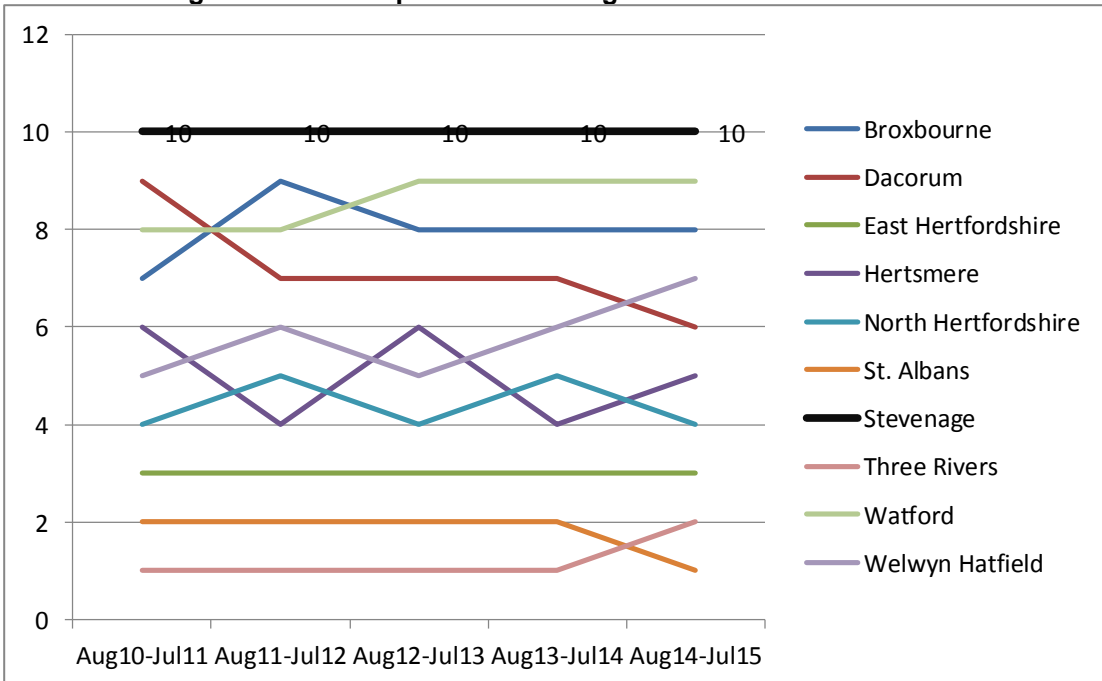
#### Criminal damage total – Herts CSPs

criminal damage	Aug10-Jul11	Aug11-Jul12	Aug12-Jul13	Aug13-Jul14	Aug14-Jul15
Broxbourne	975	915	755	730	835
Dacorum	1758	1293	1161	1125	1142
East Hertfordshire	1152	1013	810	770	856
Hertsmere	952	783	704	609	726
North Hertfordshire	1157	1031	758	804	858
St. Albans	1148	980	796	721	774
Stevenage	1259	928	861	793	901
Three Rivers	667	518	434	434	500
Watford	951	828	901	783	872
Welwyn Hatfield	1053	925	772	763	919

**Criminal damage total – Herts CSPs comparator**



**Criminal damage - Herts CSPs position / ranking 2010 - 2015**



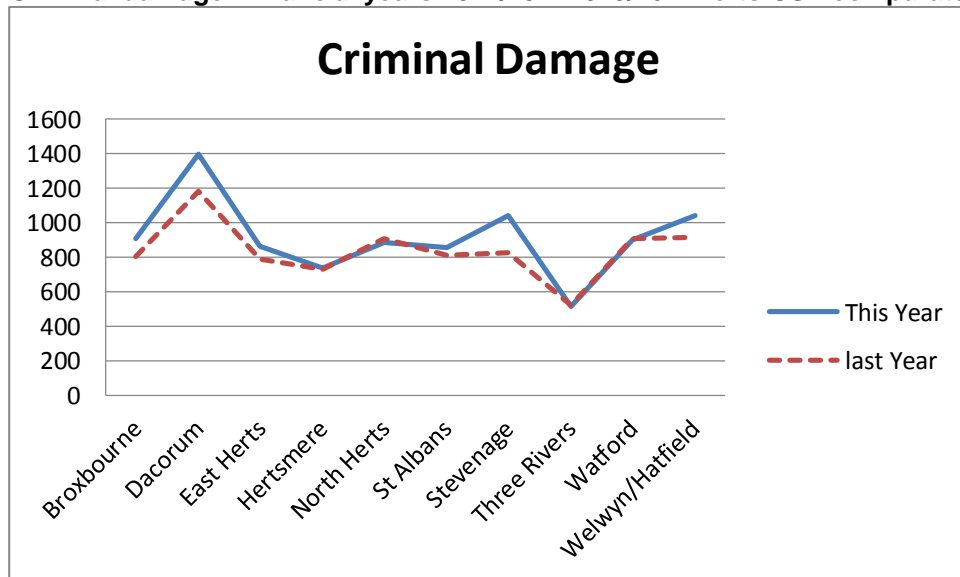
**6.2 Last two financial years – 2014/2016**

6.2.1 Stevenage has continued to show an increase in this crime type during the last two years, a trend which is evident across most of the county. Small decreases have been experienced in North Herts, Watford and Three Rivers.

**Criminal damage – financial years 2014/15 – 2015/16**

CSP	This Year	last Year	Change	% Change
Broxbourne	907	800	107	13.4%
Dacorum	1396	1179	217	18.4%
East Herts	865	789	76	9.6%
Hertsmere	737	729	8	1.1%
North Herts	882	906	-24	-2.6%
St Albans	853	808	45	5.6%
Stevenage	1042	828	214	25.8%
Three Rivers	518	524	-6	-1.1%
Watford	898	905	-7	-0.8%
Welwyn/Hatfield	1043	913	130	14.2%
<b>Total</b>	<b>9141</b>	<b>8381</b>	<b>760</b>	<b>9.1%</b>

**Criminal damage - financial years 2014/15 – 2015/16 – Herts CSP comparator**



**6.3 Ward data 2011-2016**

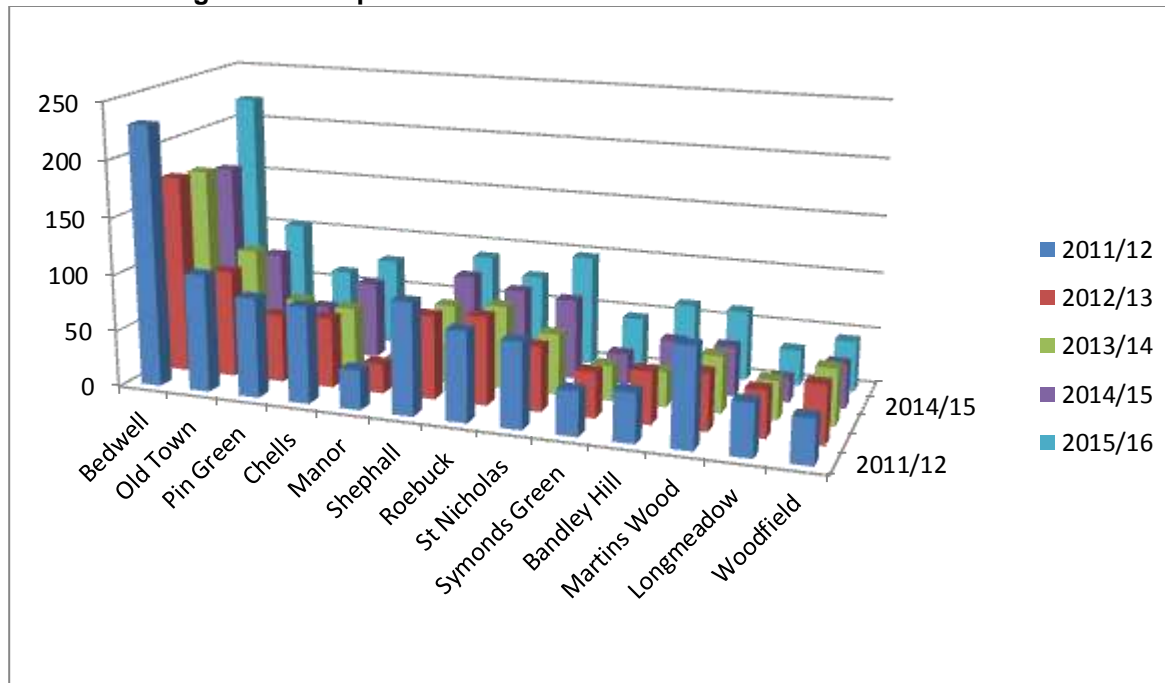
6.3.1 The ward data demonstrates Bedwell as being the consistent top hotspot, with the Old Town a consistent secondary hotspot. A third hotspot can be found to fluctuate between Roebuck and Shephall across the last five years.

**Criminal damage ward data 2011-16**

	2011/12	2012/13	2013/14	2014/15	2015/16
Bedwell	230	175	171	164	221
Old Town	104	95	102	87	104
Pin Green	88	60	61	42	63
Chells	85	62	58	68	78
Manor	35	26	16	35	27

Shephall	99	74	70	84	90
Roebuck	79	78	74	75	76
St Nicholas	75	57	54	71	98
Symonds Green	39	40	31	27	46
Bandley Hill	43	46	31	44	63
Martins Wood	87	50	50	44	62
Longmeadow	46	41	34	21	32
Woodfield	39	51	50	39	45

### Criminal damage ward comparator 2011-16



## 6.4 Most similar groups

6.4.1 The table below demonstrates that Stevenage’s position in the most similar group has fluctuated over the last five years. The CSP is currently being out performed by 12 towns within the most similar group (Stevenage is in 13<sup>th</sup> place). Currently, the most similar Hertfordshire district is Broxbourne, ranked in second place.

Year	Per 1000	Average per 1000	MSG position	Closest MSG	Closest Herts MSG
2011-2012	12.167	12.047	11	Dartford & Gravesham (rank 10 – 12.043)	Watford (rank 2 – 9.608)
2012-2013	9.886	10.149	9	Rushmoor (rank 8 – 9.729)	Watford (rank 4 – 9.217)
2013-2014	9.279	9.397	7	Kirklees (rank 6 – 9.278)	Broxbourne (rank 2 – 7.217)
2014-2015	9.186	9.482	6	Crawley	Broxbourne

				(rank 5 – 8.991)	(rank 2 – 8.000)
2015-2016	11.454	10.132	13	Bolton (rank 12 – 11.275)	Broxbourne (rank 2 – 8.877)

## 7. Antisocial behaviour (ASB)

### 7.1 Strategic assessment data 2010 – 2015

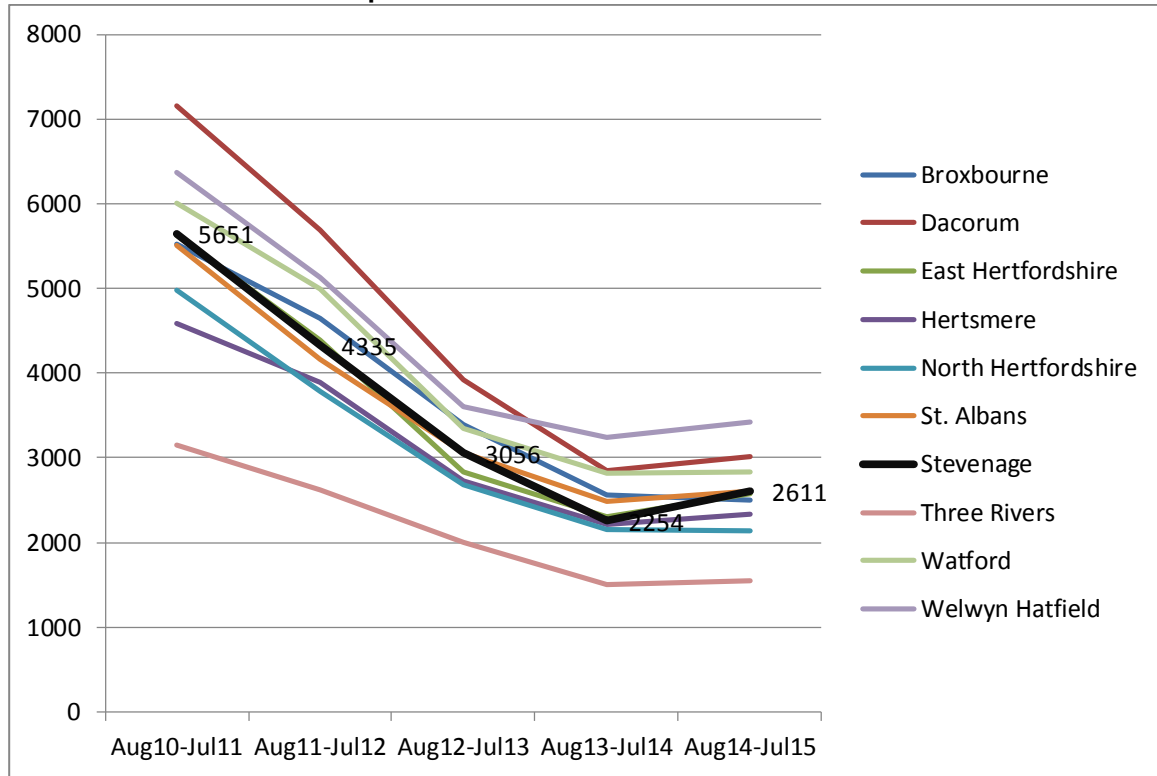
7.1.1 The strategic assessment data shows us that Stevenage CSP has significantly lower levels of ASB than in 2010 (5651 in 2010/11 down to 2611 in 2014/15). However, following a steady decline, we started to see an increase in this crime type during 2013/14, predominantly due to youth related ASB in the Shephall area. However, a pattern of slight increase is evident across most of Hertfordshire. Stevenage was placed tenth in the county rankings during 2014/15 (from seven in 2013/14). Please see table and charts below.

#### ASB total – Herts CSPs

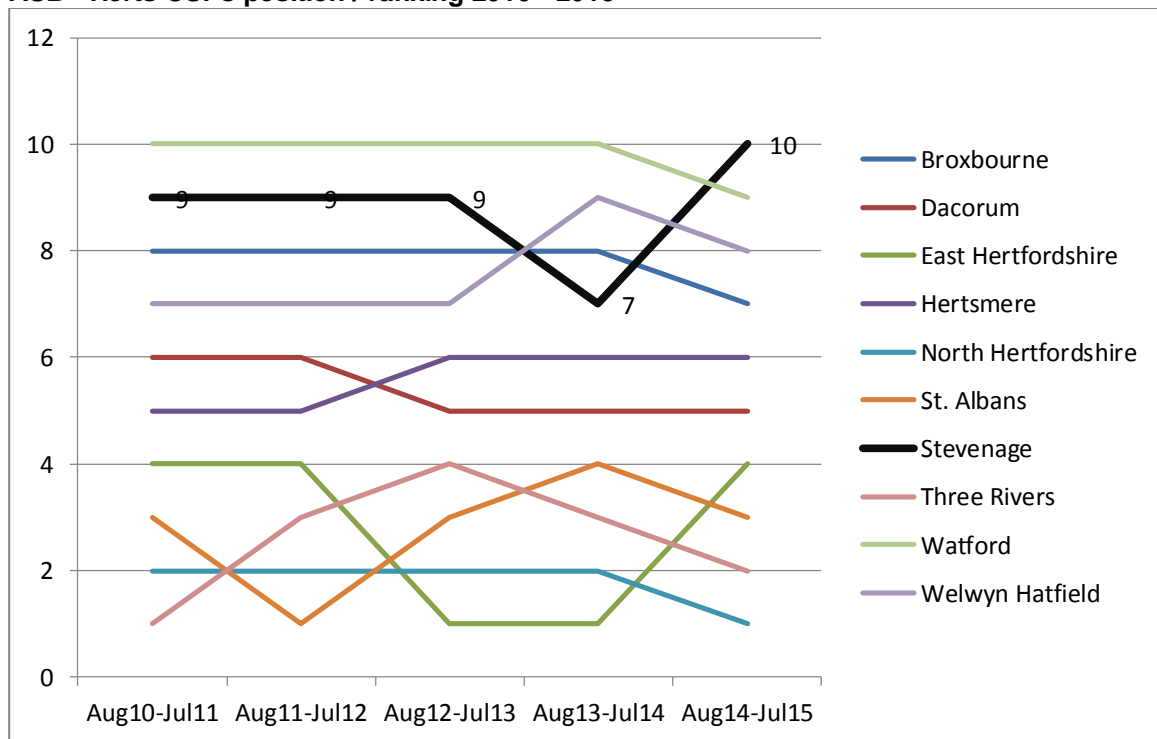
	Aug10- Jul11	Aug11- Jul12	Aug12- Jul13	Aug13- Jul14	Aug14- Jul15
Broxbourne	5530	4642	3393	2564	2502
Dacorum	7155	5690	3917	2849	3022
East Hertfordshire	5629	4397	2841	2302	2578
Hertsmere	4591	3884	2735	2213	2329
North Hertfordshire	4984	3782	2677	2157	2138
St. Albans	5515	4167	3065	2487	2606
Stevenage	5651	4335	3056	2254	2611
Three Rivers	3145	2627	1998	1503	1546
Watford	6013	4993	3346	2820	2840
Welwyn Hatfield	6377	5135	3610	3236	3419



**ASB total – Herts CSPs comparator**



**ASB - Herts CSPs position / ranking 2010 - 2015**



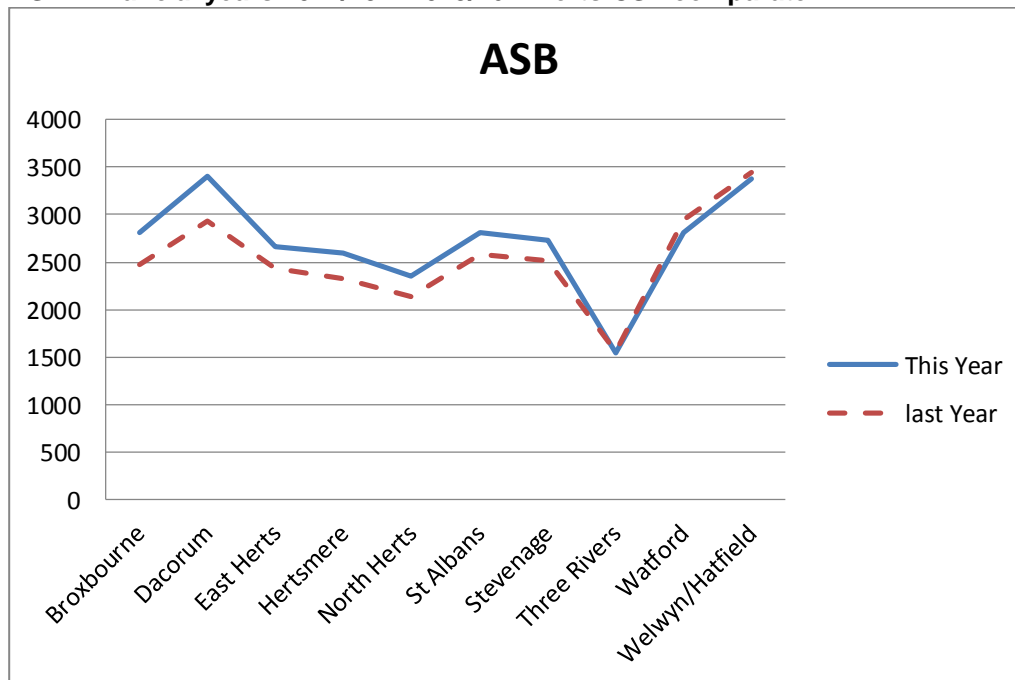
## 7.2 Last two financial years – 2014/2016

7.2.1 Stevenage has shown an increase in ASB during the last two years, a trend which is evident across most of the county. This is a continuation of the trend relating to an increase in youth ASB in Shephall, although the trend has been slowing during 2015/16. Small decreases have been experienced in Three Rivers, Watford and Welwyn / Hatfield.

**ASB – financial years 2014/15 – 2015/16**

	ASB			
	This Year	last Year	Change	% Change
Broxbourne	2805	2475	330	13.3%
Dacorum	3404	2934	470	16.0%
East Herts	2658	2428	230	9.5%
Hertsmere	2601	2326	275	11.8%
North Herts	2349	2140	209	9.8%
St Albans	2812	2580	232	9.0%
<b>Stevenage</b>	<b>2735</b>	2508	227	9.1%
Three Rivers	1542	1560	-18	-1.2%
Watford	2815	2941	-126	-4.3%
Welwyn/Hatfield	3378	3439	-61	-1.8%
<b>Total</b>	<b>27099</b>	25331	1768	7.0%

**ASB - financial years 2014/15 – 2015/16 – Herts CSP comparator**



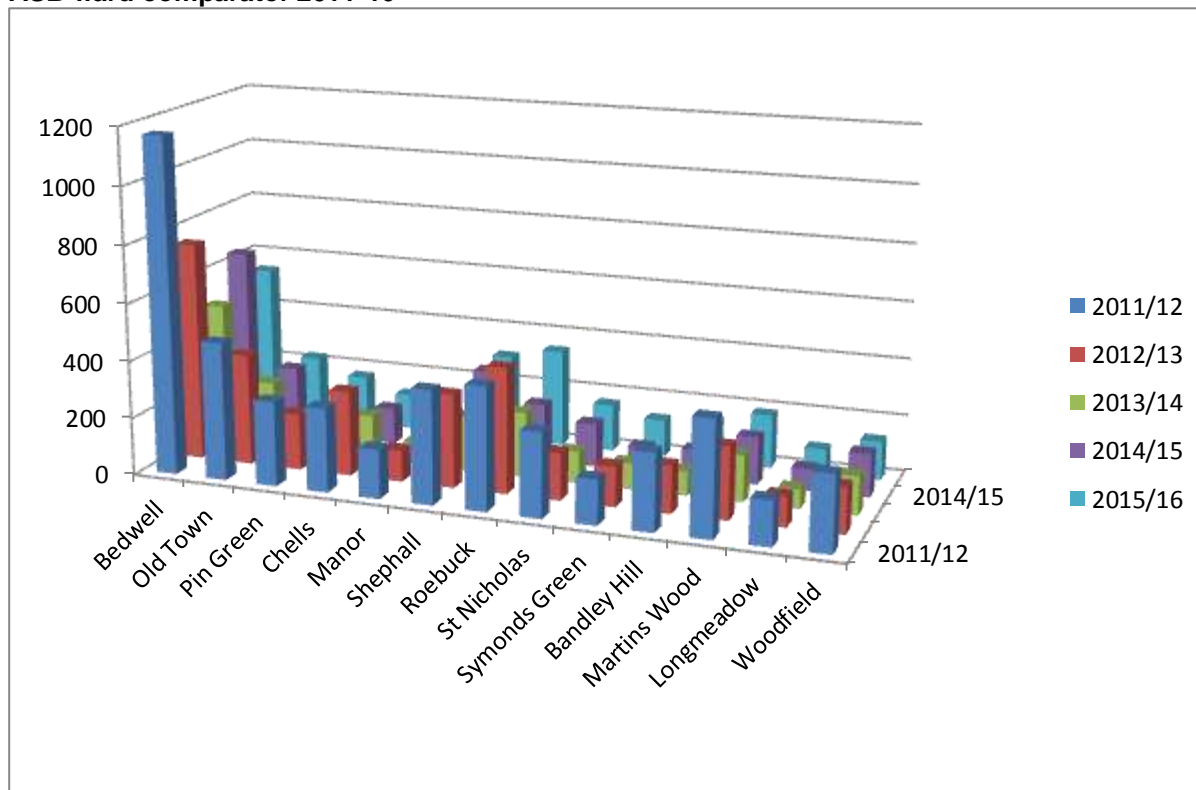
### 7.3 Ward data 2011-2016

7.3.1 The ward data demonstrates Bedwell as being the consistent top hotspot, with the Old Town, Roebuck and Shephall fluctuating between second and third hot spot area.

**ASB ward data 2011-16**

	2011/12	2012/13	2013/14	2014/15	2015/16
Bedwell	1168	761	499	645	542
Old Town	481	387	236	238	227
Pin Green	296	196	100	124	173
Chells	293	297	155	127	124
Manor	171	110	79	60	55
Shephall	395	326	191	302	305
Roebuck	427	437	227	201	342
St Nicholas	294	165	111	152	165
Symonds Green	157	140	91	89	130
Bandley Hill	268	165	84	98	144
Martins Wood	401	252	162	166	188
Longmeadow	155	105	67	76	87
Woodfield	264	160	134	151	136

**ASB ward comparator 2011-16**



## 7.4 Most similar groups

ASB is not measured against our most similar group.

## 8. Domestic abuse (DA)

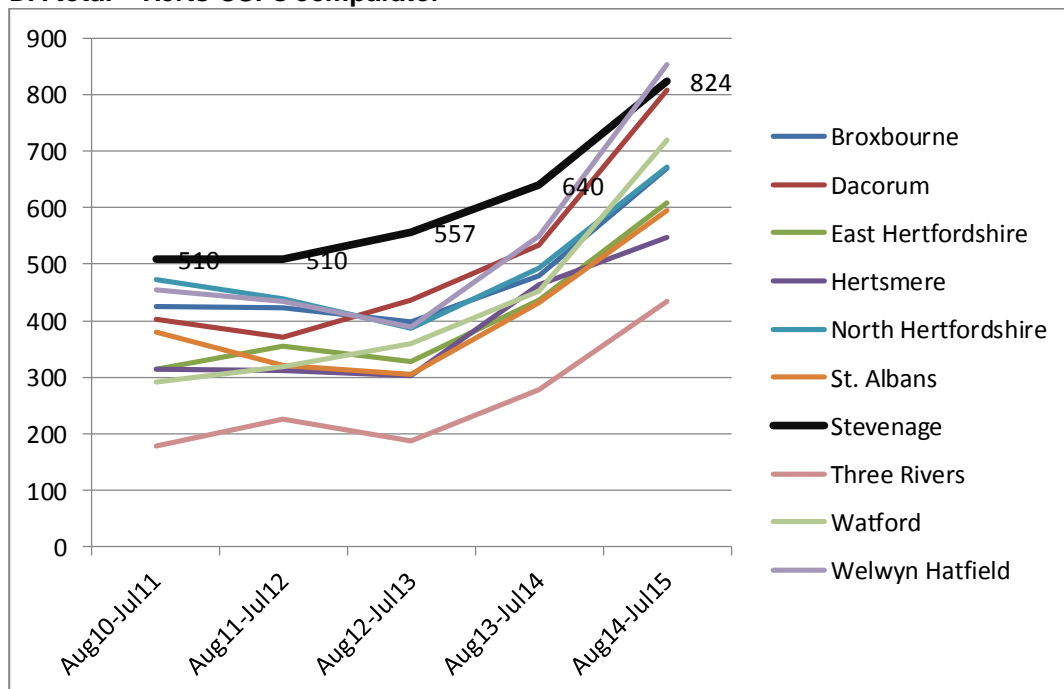
### 8.1 Strategic assessment data 2010 – 2015

8.1.1 The strategic assessment data shows us that DA has steadily increased in Stevenage CSP since 2010/11 (from 510 in 2010/11 up to 824 in 2014/15). This is a pattern of increase evident across the whole of Hertfordshire, and following a national trend. Stevenage has been placed consistently at tenth place in the county rankings for the last five years. Please see the table and charts below.

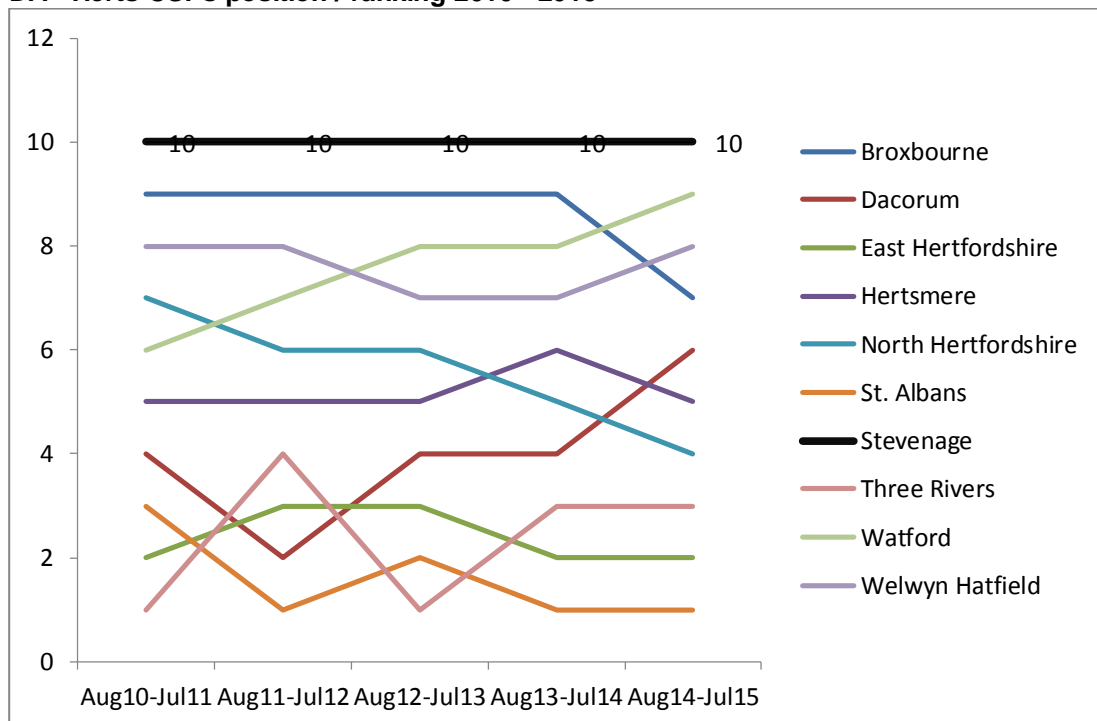
#### DA total – Herts CSPs

	Aug10-Jul11	Aug11-Jul12	Aug12-Jul13	Aug13-Jul14	Aug14-Jul15
Broxbourne	425	422	399	479	669
Dacorum	402	372	436	534	808
East Hertfordshire	314	355	328	436	609
Hertsmere	314	313	303	463	548
North Hertfordshire	473	439	387	493	671
St. Albans	381	320	305	432	595
<b>Stevenage</b>	<b>510</b>	<b>510</b>	<b>557</b>	<b>640</b>	<b>824</b>
Three Rivers	178	227	187	279	434
Watford	291	318	359	452	720
Welwyn Hatfield	454	434	389	549	852

#### DA total – Herts CSPs comparator



## DA - Herts CSPs position / ranking 2010 - 2015



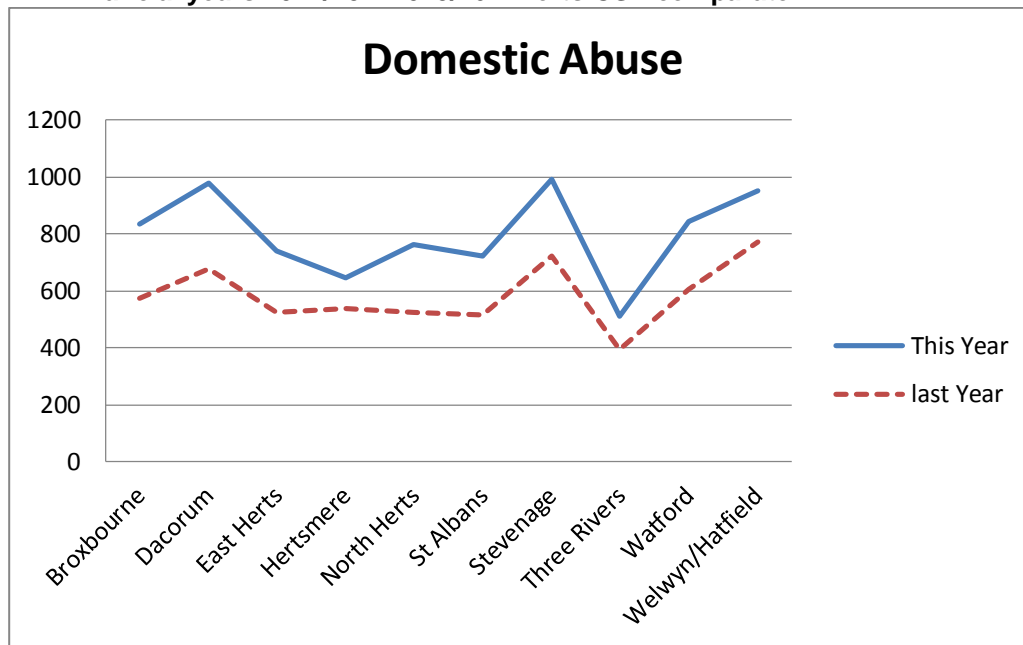
## 8.2 Last two financial years – 2014/2016

8.2.1 As the table below demonstrates, all Hertfordshire districts have increased DA figures in the last two years. This is due to improved crime recording procedures and greater public awareness of the issues, leading to an increase in reporting.

### DA – financial years 2014/15 – 2015/16

CSP	Domestic Abuse			
	This Year	last Year	Change	% Change
Broxbourne	833	573	260	45.4%
Dacorum	977	676	301	44.5%
East Herts	742	527	215	40.8%
Hertsmere	645	539	106	19.7%
North Herts	761	526	235	44.7%
St Albans	723	515	208	40.4%
Stevenage	992	724	268	37.0%
Three Rivers	511	396	115	29.0%
Watford	844	604	240	39.7%
Welwyn/Hatfield	952	770	182	23.6%
<b>Total</b>	<b>7980</b>	<b>5850</b>	<b>2130</b>	<b>36.4%</b>

**DA - financial years 2014/15 – 2015/16 – Herts CSP comparator**



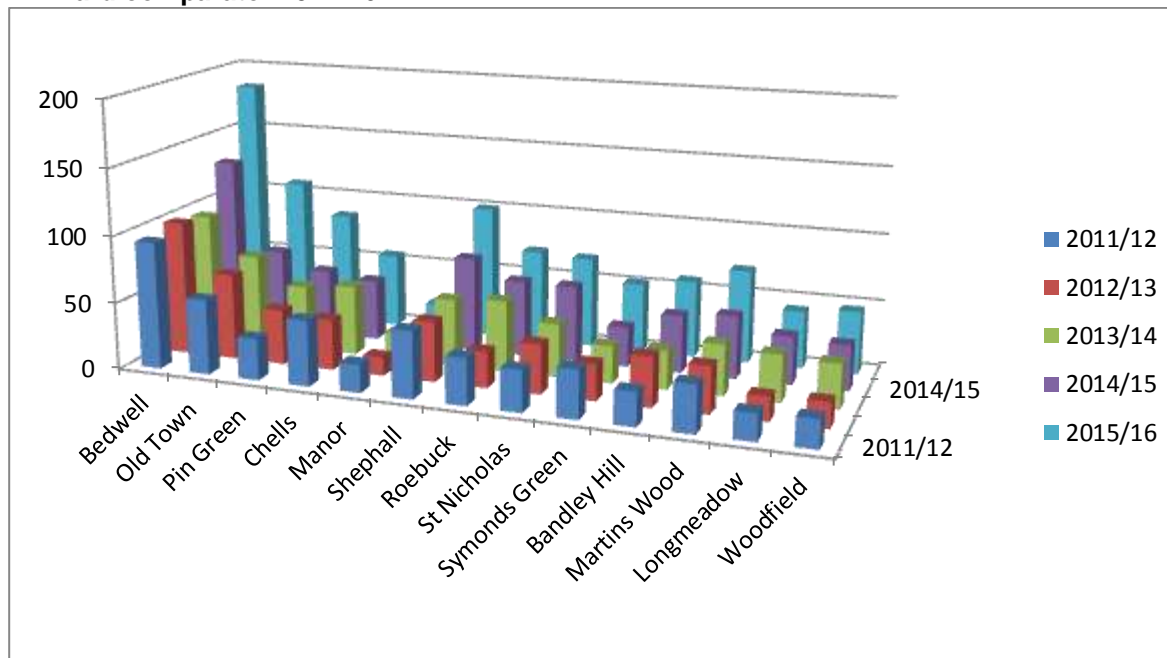
**8.3 Ward data 2011-2016**

8.3.1 The ward data places Bedwell as the consistent hotspot for DA over the last five years. The Old Town is the consistent secondary hot spot with Shephall, Roebuck and St Nicholas fluctuating in third.

**DA ward data 2011-16**

	2011/12	2012/13	2013/14	2014/15	2015/16
Bedwell	95	100	96	130	184
Old Town	56	64	68	62	108
Pin Green	31	41	48	50	85
Chells	49	38	52	46	56
Manor	21	14	20	13	20
Shephall	50	45	50	71	100
Roebuck	35	27	53	57	70
St Nicholas	31	37	40	57	68
Symonds Green	36	27	28	30	52
Bandle Hill	25	37	29	43	58
Martins Wood	35	35	38	47	70
Longmeadow	20	18	35	36	43
Woodfield	21	19	33	34	47

## DA ward comparator 2011-16



### 8.4 Most similar groups

DA is not measured against our most similar group.

## 9. Violence against the person

### 9.1 Strategic assessment data 2010 – 2015

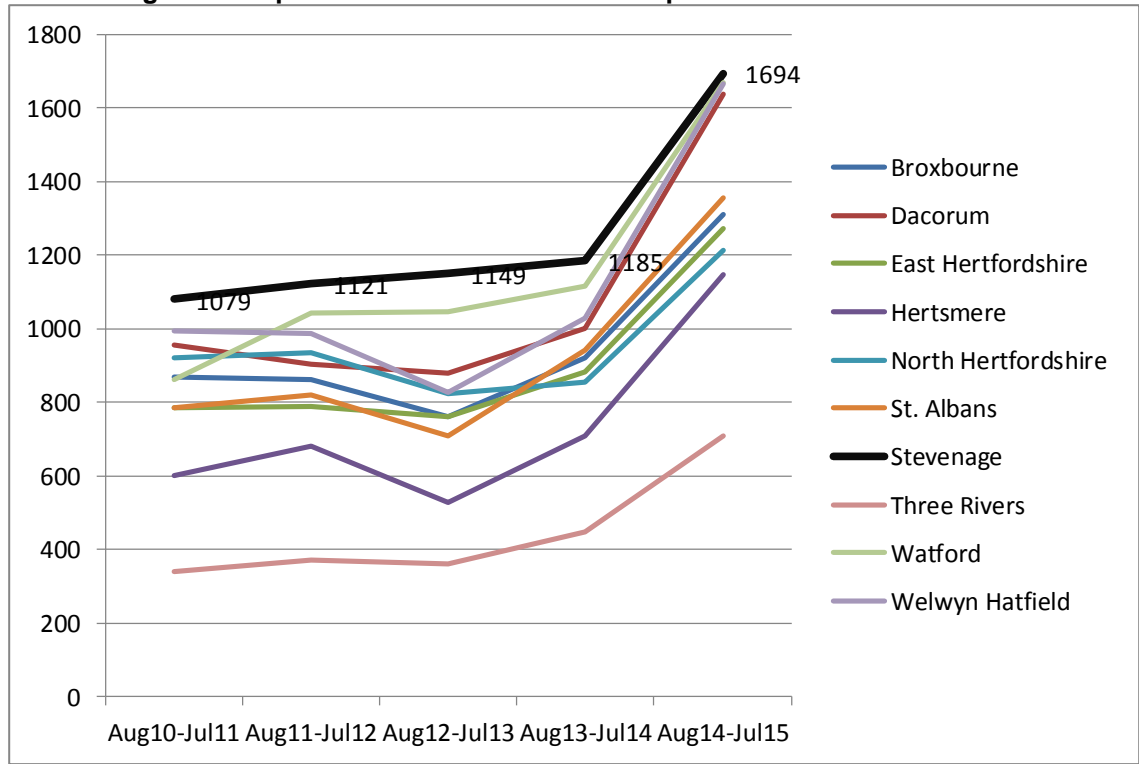
9.1.1 The strategic assessment data shows us that violence against the person steadily increased in Stevenage CSP since 2010/11 (from 1079 in 2010/11 up to 1694 in 2014/15). This is a pattern of increase evident across the whole of Hertfordshire, and following a national trend. It includes domestic violence incidents. Stevenage has been placed consistently at tenth place in the county rankings for the last five years. Please see the table and charts below.

#### Violence against the person total – Herts CSPs

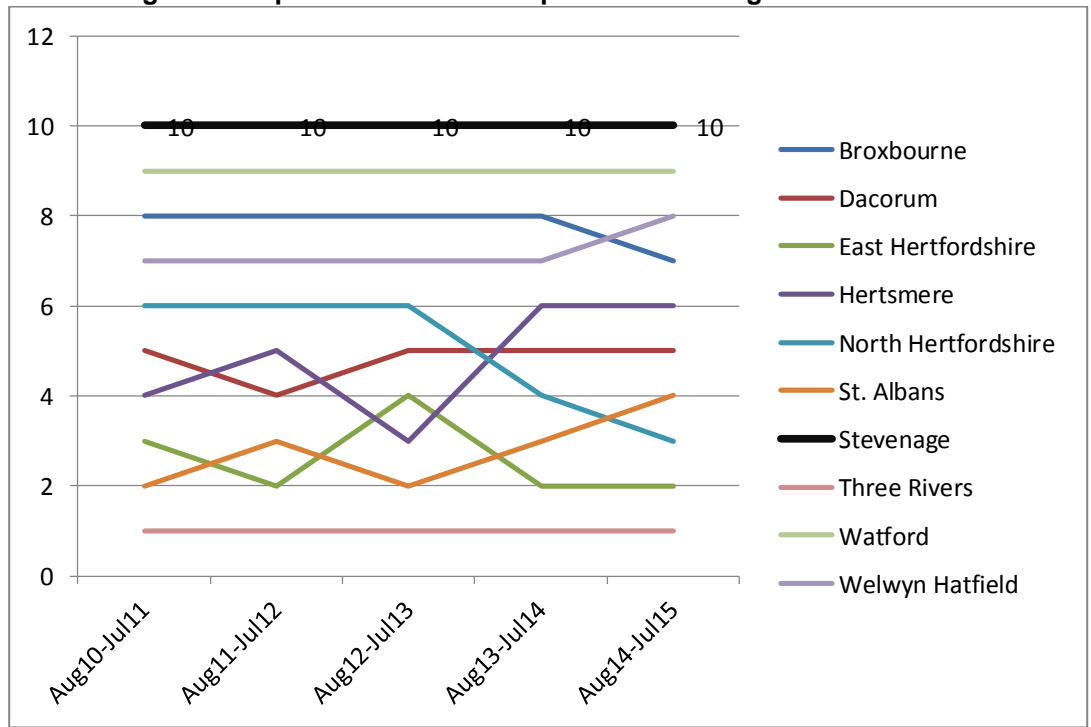
	Aug10-Jul11	Aug11-Jul12	Aug12-Jul13	Aug13-Jul14	Aug14-Jul15
Broxbourne	869	860	762	919	1311
Dacorum	957	903	878	1000	1636
East Hertfordshire	785	790	760	881	1273
Hertsmere	600	681	527	710	1147
North Hertfordshire	921	933	824	856	1214
St. Albans	785	819	707	941	1354
<b>Stevenage</b>	<b>1079</b>	<b>1121</b>	<b>1149</b>	<b>1185</b>	<b>1694</b>
Three Rivers	339	370	359	447	709

Watford	860	1042	1046	1115	1669
Welwyn Hatfield	995	987	827	1027	1664

**Violence against the person total – Herts CSPs comparator**



**Violence against the person - Herts CSPs position / ranking 2010 - 2015**





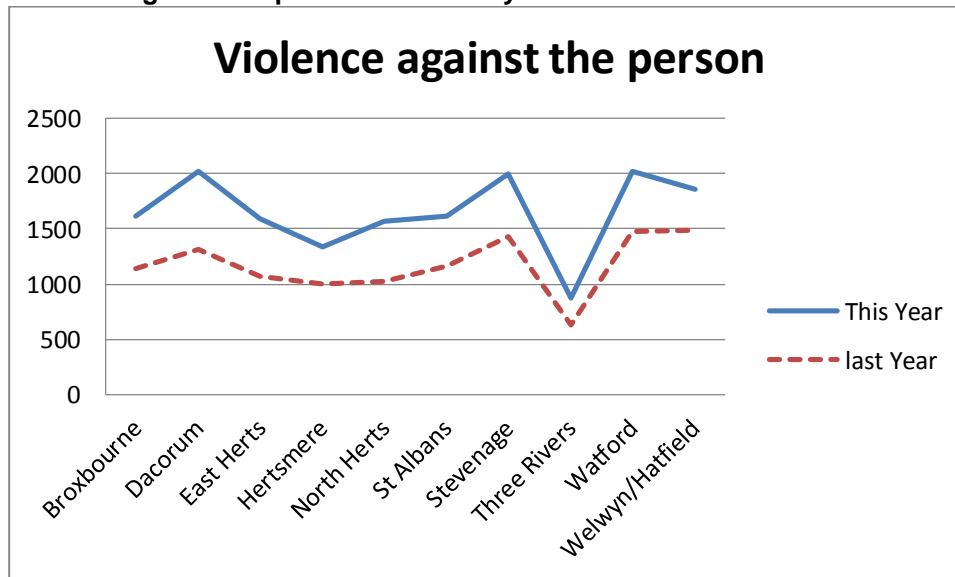
## 9.2 Last two financial years – 2014/2016

9.2.1 As the table below demonstrates, all Hertfordshire districts have increased violence against the person figures in the last two years. This is due to improved crime recording procedures and greater public awareness of the issues, leading to an increase in reporting.

### Violence against the person – financial years 2014/15 – 2015/16

CSP	This Year	last Year	Change	% Change
Broxbourne	1612	1137	475	41.8%
Dacorum	2018	1313	705	53.7%
East Herts	1589	1073	516	48.1%
Hertsmere	1341	1003	338	33.7%
North Herts	1563	1019	544	53.4%
St Albans	1617	1163	454	39.0%
Stevenage	2002	1433	569	39.7%
Three Rivers	872	634	238	37.5%
Watford	2026	1475	551	37.4%
Welwyn/Hatfield	1857	1493	364	24.4%
<b>Total</b>	<b>16497</b>	<b>11743</b>	<b>4754</b>	<b>40.5%</b>

### Violence against the person - financial years 2014/15 – 2015/16 – Herts CSP comparator



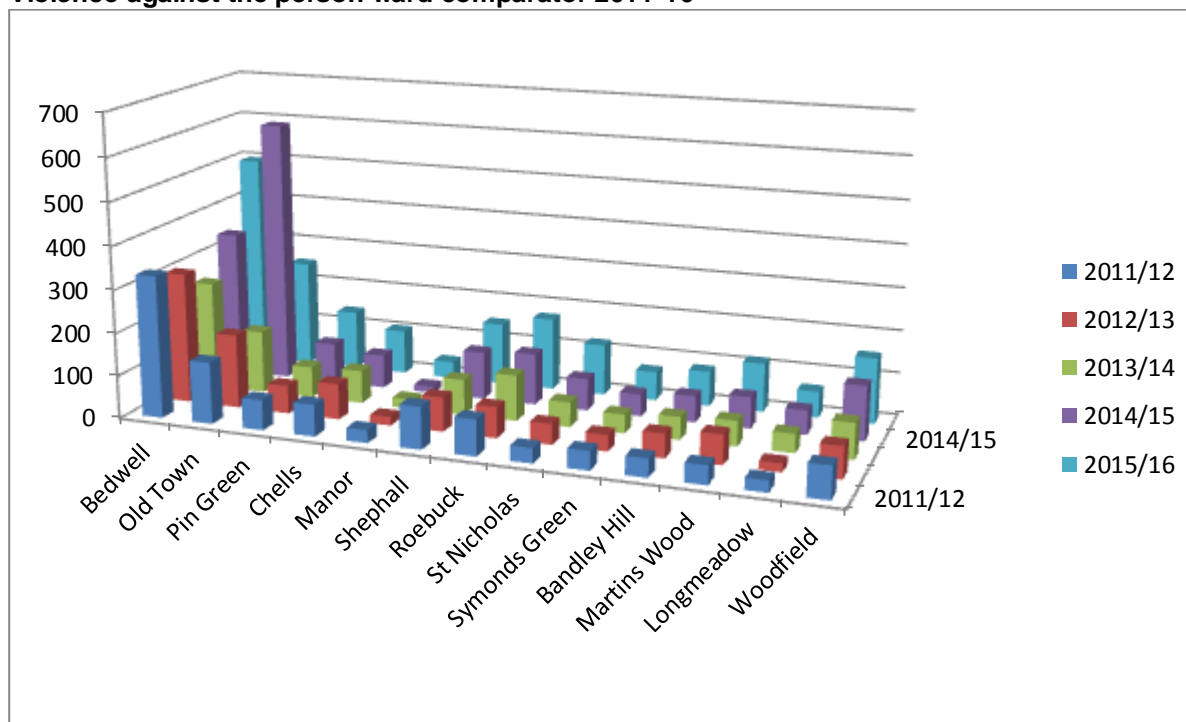
## 9.3 Ward data 2011-2016

9.3.1 The ward data shows Bedwell as the consistent top hotspot, with the Old Town as consistent secondary hotspot during the last five years.

**Violence against the person ward data 2011-16**

	2011/12	2012/13	2013/14	2014/15	2015/16
Bedwell	332	305	251	340	497
Old Town	144	172	146	613	250
Pin Green	70	65	73	94	139
Chells	74	83	77	79	104
Manor	30	20	22	15	39
Shephall	98	80	83	112	146
Roebuck	84	72	107	121	171
St Nicholas	35	48	58	75	120
Symonds Green	44	38	44	52	68
Bandley Hill	43	56	53	62	82
Martins Wood	44	69	59	74	115
Longmeadow	27	20	44	57	62
Woodfield	75	74	84	128	154

**Violence against the person ward comparator 2011-16**



**9.4 Most similar groups**

9.4.1 Violence against the person was last recorded against the most similar groupings in 2013/14, where Stevenage was ranked seventh, and our closest Hertfordshire CSP was Broxbourne, ranked in second place.

Year	Per 1000	Average per 1000	MSG position	Closest MSG	Closest Herts MSG
2011-2012	-	-	-	-	-
2012-2013	16.251	15.448	11	Crawley (rank 12 – 17.518)	Watford (rank 9 – 14.626)
2013-2014	13.175	13.5	7	Northampton (rank 8 – 13.335)	Broxbourne (rank 2 – 8.783)
2014-2015	-	-	-	-	-
2015-2016	-	-	-	-	-

## 10. Drug trafficking (class A)

### 10.1 Strategic assessment data 2010 – 2015

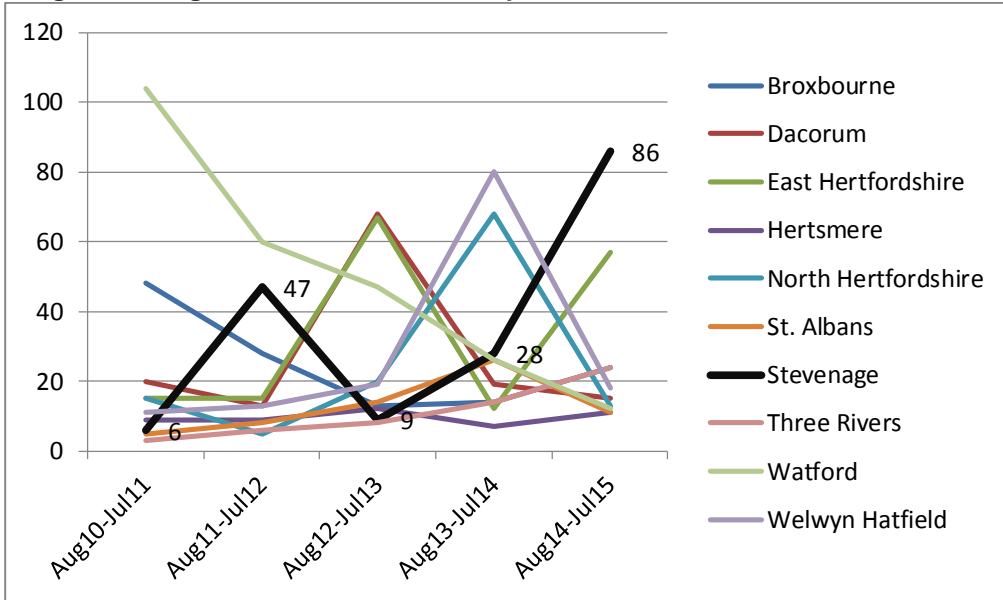
10.1.1 The strategic assessment data shows us that drug trafficking has increased sharply since 2012/13 when it was at an all time low. However, this is predominantly due to an increase in proactive police operations and issuing of drugs warrants under the auspices of Operation Scorpion. There is no particular trend pattern for this crime type in Hertfordshire. Stevenage is ranked tenth for drug trafficking. Please see the table and charts below.

#### Drug trafficking total – Herts CSPs

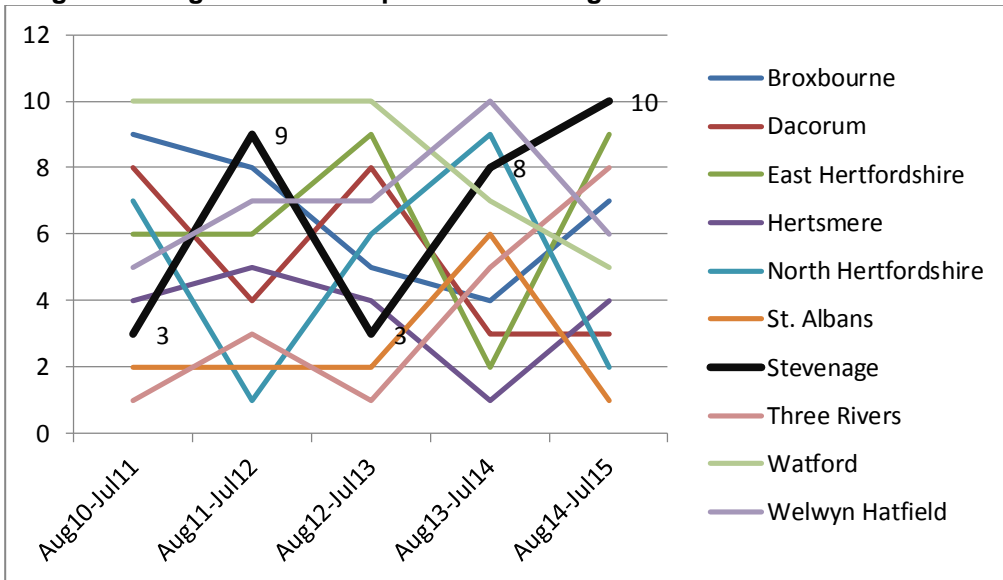
Names	Aug10-Jul11	Aug11-Jul12	Aug12-Jul13	Aug13-Jul14	Aug14-Jul15
Broxbourne	48	28	13	14	24
Dacorum	20	13	68	19	15
East Hertfordshire	15	15	67	12	57
Hertsmere	9	9	12	7	11
North Hertfordshire	15	5	20	68	13
St. Albans	5	8	14	26	11
Stevenage	6	47	9	28	86
Three Rivers	3	6	8	14	24
Watford	104	60	47	26	12
Welwyn Hatfield	11	13	19	80	18

=

**Drug trafficking total – Herts CSPs comparator**



**Drug trafficking - Herts CSPs position / ranking 2010 - 2015**



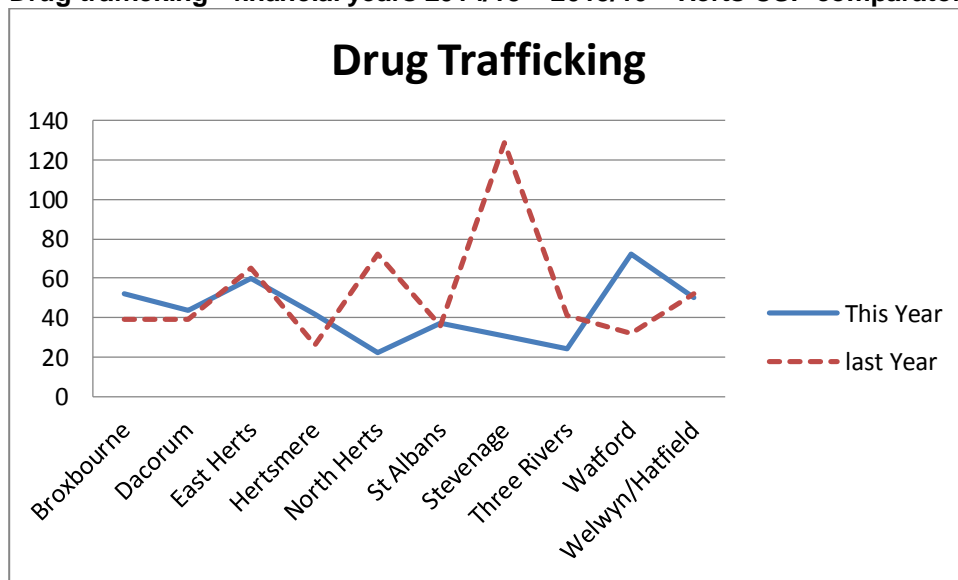
**10.2 Last two financial years – 2014/2016**

10.2.1 As the table below demonstrates, drug trafficking has decreased in Stevenage over the last two years. However, this may be due to decreases in intelligence or evidence in relation to this crime type, with fewer warrants issued. This decrease may also be linked to changes in stop and search procedures being implemented during 2014/15. There is no particular pattern across the county.

**Drug trafficking – financial years 2014/15 – 2015/16**

CSP	Drug Trafficking			
	This Year	last Year	Change	% Change
Broxbourne	52	39	13	33.3%
Dacorum	44	39	5	12.8%
East Herts	60	65	-5	-7.7%
Hertsmere	42	26	16	61.5%
North Herts	22	72	-50	-69.4%
St Albans	37	36	1	2.8%
Stevenage	31	129	-98	-76.0%
Three Rivers	24	41	-17	-41.5%
Watford	72	32	40	125.0%
Welwyn/Hatfield	50	52	-2	-3.8%
<b>Total</b>	<b>434</b>	<b>531</b>	<b>-97</b>	<b>-18.3%</b>

**Drug trafficking - financial years 2014/15 – 2015/16 – Herts CSP comparator**



**10.3 Ward data 2011-2016**

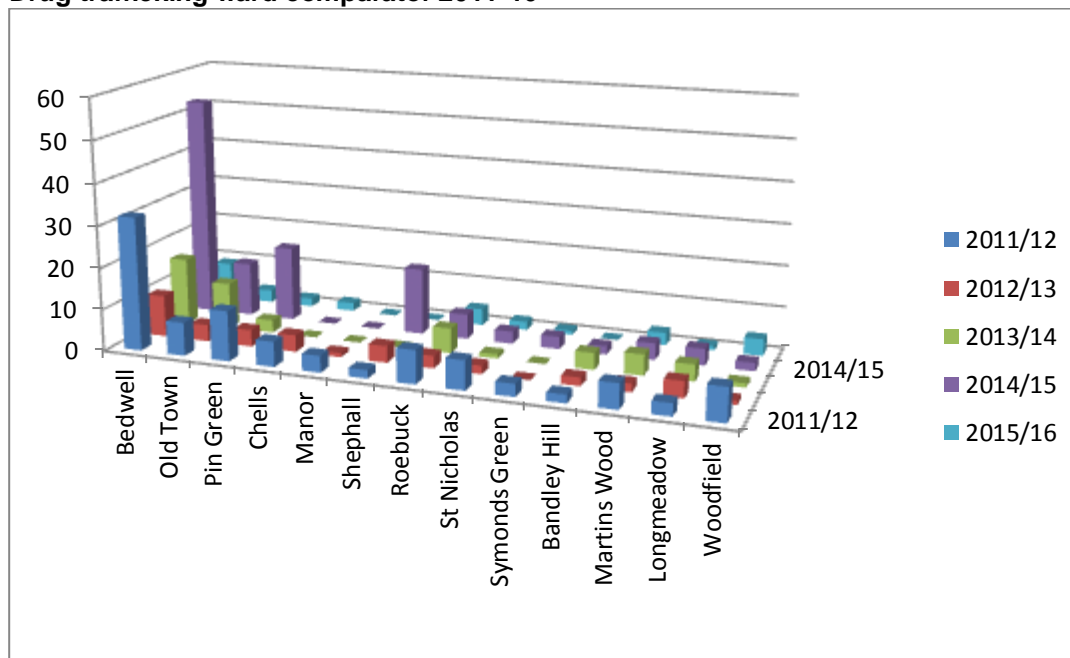
10.3.1 The ward data shows Bedwell as the consistent top hotspot, with no obvious secondary hotspots, but with some higher rates demonstrated in Old Town, Pin Green and Shephall.

**Drug trafficking ward data 2011-16**

	2011/12	2012/13	2013/14	2014/15	2015/16
Bedwell	32	10	16	53	9
Old Town	8	4	11	13	3
Pin Green	12	4	3	18	2

Chells	6	4	0	0	2
Manor	4	1	0	0	0
Shephall	2	4	0	16	0
Roebuck	8	3	6	6	4
St Nicholas	7	2	1	3	2
Symonds Green	3	0	0	3	1
Bandley Hill	2	2	4	2	0
Martins Wood	6	2	5	4	3
Longmeadow	3	4	4	4	1
Woodfield	8	1	1	2	4

### Drug trafficking ward comparator 2011-16



## 10.4 Most similar groups

10.4.1 Stevenage has been ranked 15<sup>th</sup> in its MSG for the last two years. Our closest Hertfordshire CSP is Broxbourne, ranked in seventh place.

Year	Per 1000	Average per 1000	MSG position	Closest MSG	Closest Herts MSG
2011-2012	1.187	0.823	13	Tameside (rank 12, 1.133)	Watford (rank 15, 1.897)
2012-2013	0.491	0.636	6	Rushmoor (rank 5, 0.474)	Watford (rank 12, 0.885)
2013-2014	0.616	0.565	11	Luton (rank 10, 0.611)	Broxbourne (rank 5, 0.455)
2014-2015	1.477	0.531	15	Plymouth (rank 14, 0.688)	Broxbourne (rank 7, 0.428)

2015-2016	1.477	0.531	15	Plymouth (rank 14, 0.688)	Broxbourne (rank 7, 0.428)
-----------	-------	-------	----	---------------------------	----------------------------

## 11. Drug possession

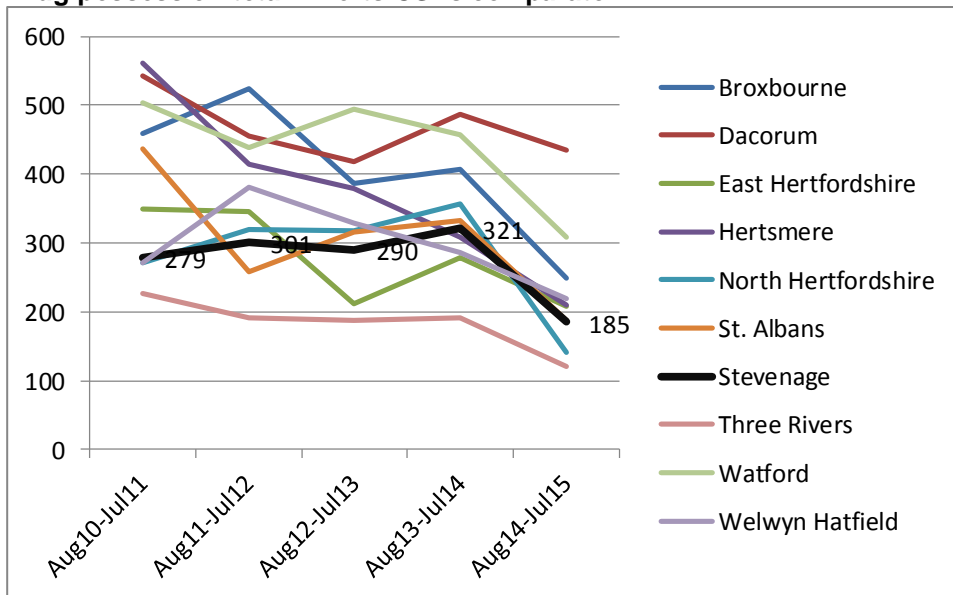
### 11.1 Strategic assessment data 2010 – 2015

11.1.1 The strategic assessment data shows us that drug possession has decreased since 2010/11 with a peak during 2013/14 (321). The decrease since then could be linked to changes in stop and search practices.

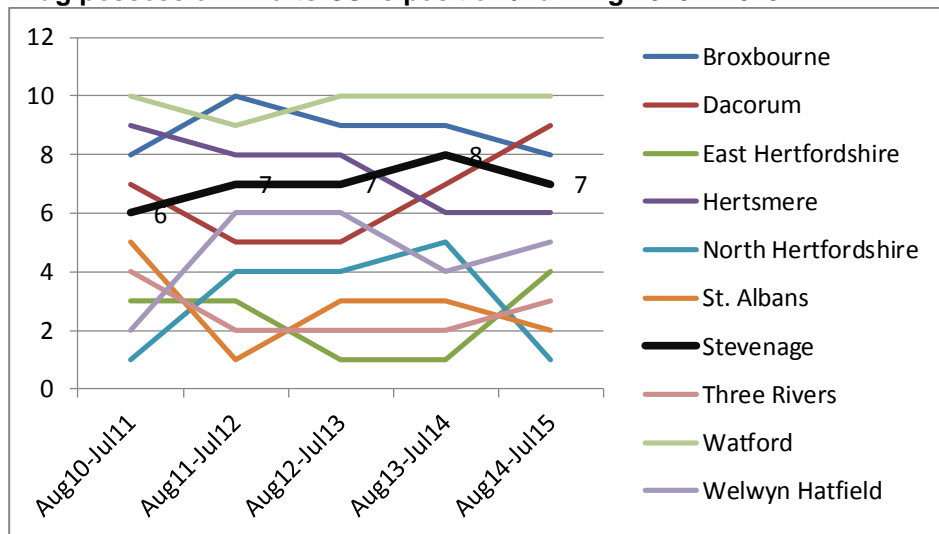
#### Drug possession total – Herts CSPs

	Aug10-Jul11	Aug11-Jul12	Aug12-Jul13	Aug13-Jul14	Aug14-Jul15
Broxbourne	459	524	387	406	249
Dacorum	543	455	419	486	434
East Hertfordshire	350	346	212	279	208
Hertsmere	561	414	379	309	209
North Hertfordshire	271	320	317	357	141
St. Albans	437	259	315	333	188
<b>Stevenage</b>	<b>279</b>	<b>301</b>	<b>290</b>	<b>321</b>	<b>185</b>
Three Rivers	226	191	187	191	121
Watford	504	438	495	458	309
Welwyn Hatfield	271	380	328	287	219

#### Drug possession total – Herts CSPs comparator



## Drug possession - Herts CSPs position / ranking 2010 – 2015



## 11.2 Last two financial years – 2014/2016

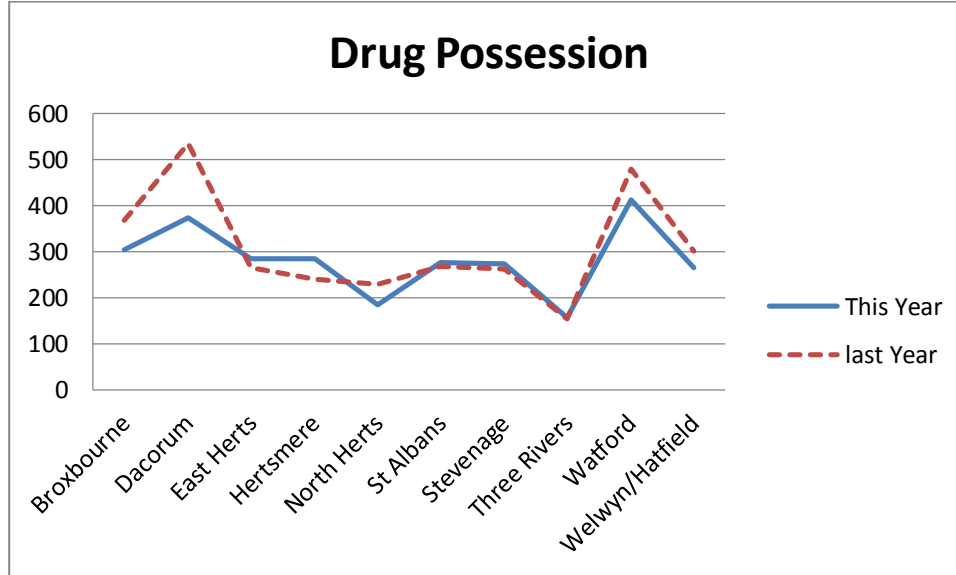
11.2.1 As the table below demonstrates, drug possession has increased by a small amount in Stevenage over the last two years (+3.8%). We are now at a similar level to 201/11 (at 279). As with drug trafficking, there is no particular pattern across the county.

### Drug possession – financial years 2014/15 – 2015/16

CSP	This Year	last Year	Change	% Change
Broxbourne	303	368	-65	-17.7%
Dacorum	374	534	-160	-30.0%
East Herts	286	266	20	7.5%
Hertsmere	286	241	45	18.7%
North Herts	184	229	-45	-19.7%
St Albans	277	267	10	3.7%
Stevenage	273	263	10	3.8%
Three Rivers	158	154	4	2.6%
Watford	413	480	-67	-14.0%
Welwyn/Hatfield	264	300	-36	-12.0%
<b>Total</b>	<b>2818</b>	<b>3102</b>	<b>-284</b>	<b>-9.2%</b>



**Drug possession - financial years 2014/15 – 2015/16 – Herts CSP comparator**



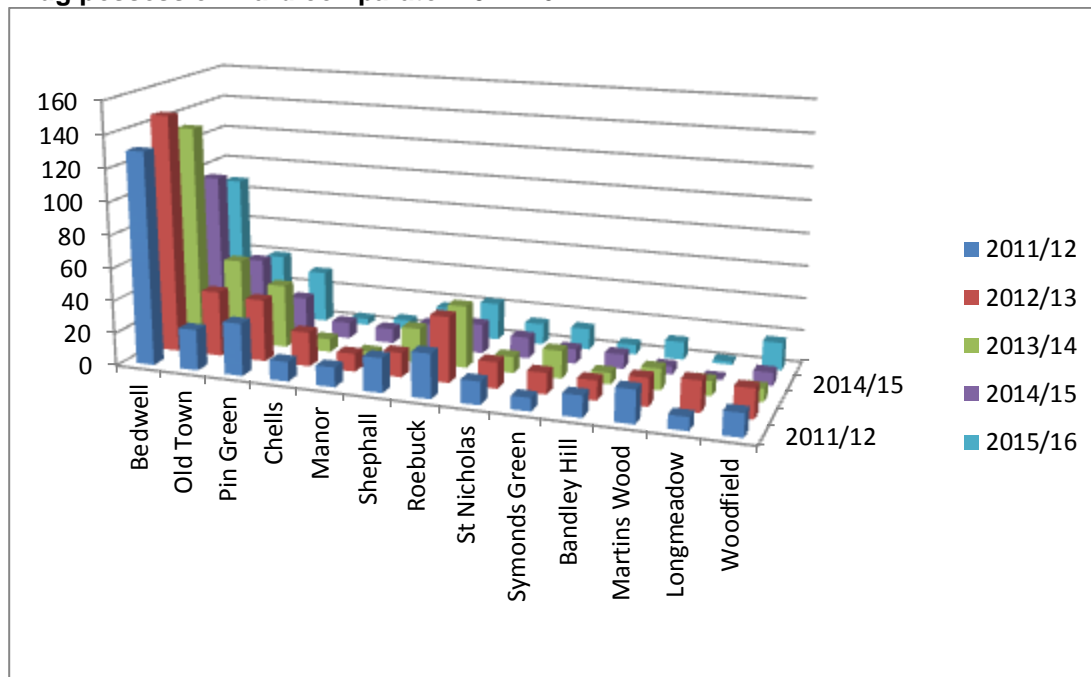
**11.3 Ward data 2011-2016**

11.3.1 The ward data shows Bedwell as the consistent top hotspot, with the Old Town identified as a secondary hotspot.

**Drug possession ward data 2011-16**

	2011/12	2012/13	2013/14	2014/15	2015/16
Bedwell	130	146	133	96	88
Old Town	25	40	52	45	40
Pin Green	32	38	39	23	32
Chells	12	21	8	10	4
Manor	12	11	3	9	6
Shephall	21	15	21	15	17
Roebuck	27	40	38	18	23
St Nicholas	14	16	10	13	13
Symonds Green	8	13	17	9	13
Bandle Hill	13	12	7	9	6
Martins Wood	20	17	13	5	11
Longmeadow	8	19	9	1	2
Woodfield	14	18	8	8	17

### Drug possession ward comparator 2011-16



### 11.4 Most similar groups

11.4.1 Stevenage has been ranked 11<sup>th</sup> in its MSG for the last two years. Our closest Hertfordshire CSP is Broxbourne, ranked in 14<sup>th</sup> place.

Year	Per 1000	Average per 1000	MSG position	Closest MSG	Closest Herts MSG
2011-2012	4.095	3.309	11	Harlow (rank 10, 3.797)	Watford (rank 15, 6.597 )
2012-2013	4.773	3.187	14	Crawley (rank 13, 4.588)	Watford (rank 15, 7.212)
2013-2014	4.175	2.727	13	Plymouth (rank 12, 3.464)	Broxbourne (rank 15, 4.522)
2014-2015	3.058	2.346	11	Harlow (rank 10, 2.602)	Broxbourne (rank 14, 3.823 )
2015-2016	3.058	2.346	11	Harlow (rank 10, 2.602)	Broxbourne (rank 14, 3.823 )